

LIVE IN ISRAEL, STUDY IN ENGLISH

ARISON SCHOOL OF BUSINESS




**GLOBAL MBA
PROGRAM
(GMBA)**

2024-2025

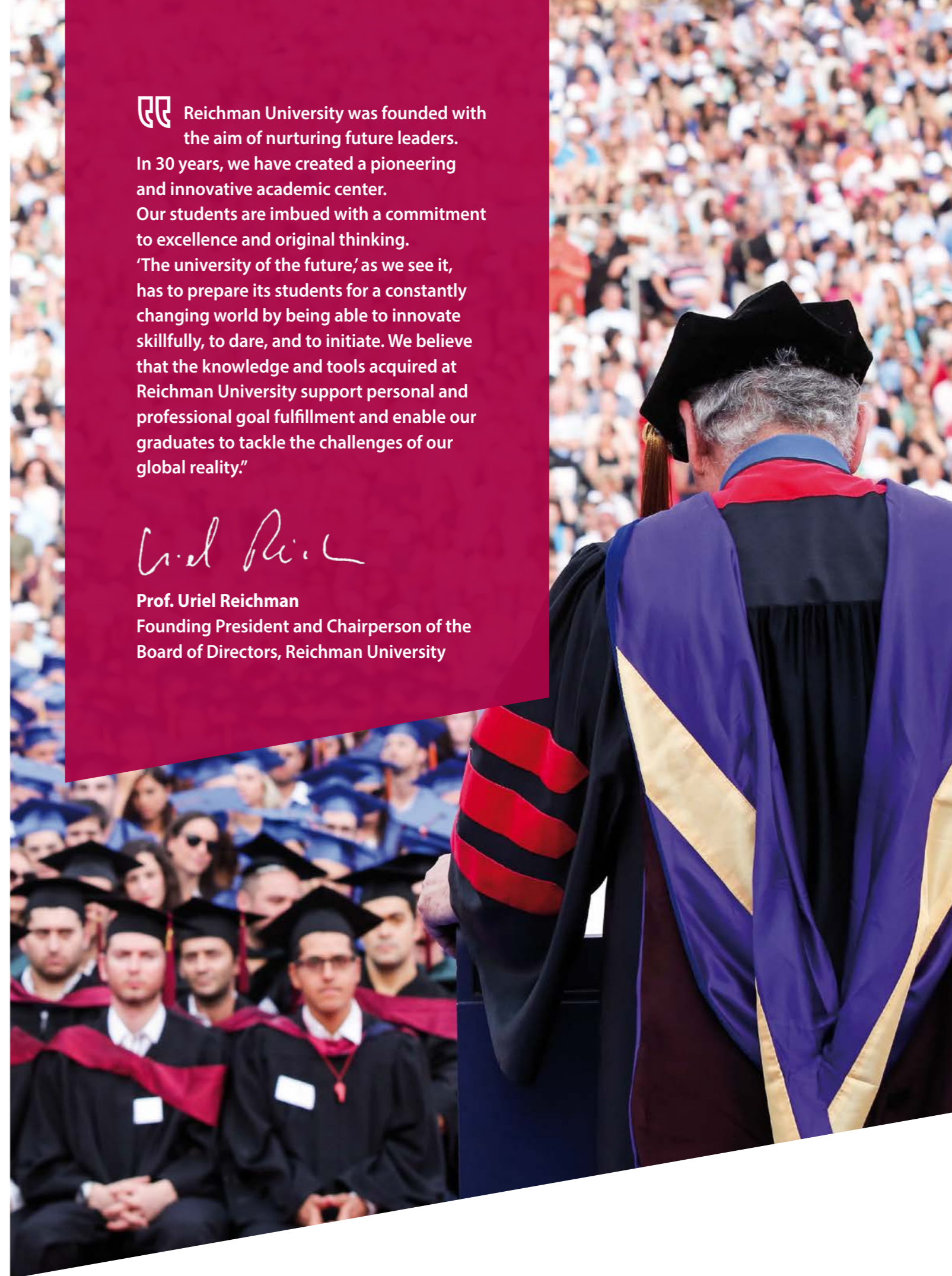
CONTENTS

GLOBAL MBA PROGRAM	4
REICHMAN UNIVERSITY FACTS	6
AI & BIG DATA TRACK	8
INNOVATION & ENTREPRENEURSHIP TRACK	10
OVERSEAS MODULE, THE ARISON LEADERSHIP RETREAT	12
FACULTY	14
APPLICATION, ADMISSION, TUITION	16
FINANCIAL AID	17
WHY REICHMAN UNIVERSITY?	18
HEALTH INSURANCE, VISA STATUS, CAREER CENTER	19
RRIS GLOBAL VILLAGE	20
GLOBAL MBA STUDENT STATISTICS	21
ACADEMIC CALENDAR	22

 Reichman University was founded with the aim of nurturing future leaders. In 30 years, we have created a pioneering and innovative academic center. Our students are imbued with a commitment to excellence and original thinking. 'The university of the future,' as we see it, has to prepare its students for a constantly changing world by being able to innovate skillfully, to dare, and to initiate. We believe that the knowledge and tools acquired at Reichman University support personal and professional goal fulfillment and enable our graduates to tackle the challenges of our global reality."



Prof. Uriel Reichman
Founding President and Chairperson of the Board of Directors, Reichman University



GLOBAL MBA PROGRAM

The Global MBA program equips you with capabilities that will fundamentally change you, and give you the skills to face and manage 21st century challenges. It is this task to which all our faculty members are devoted, and which is reflected in our up-to-date courses, the large variety of real-life projects, and the careful selection of the highest quality academic faculty. The two tracks in the GMBA program - AI & Big Data and Innovation & Entrepreneurship - leverage Israel's status as a center of progress in high-tech, innovation, and entrepreneurship, and benefit from Reichman University's resources and reputation as a leader in interdisciplinary education with strong ties to industry.

Courses are taught twice a week.

PART-TIME

Sunday: 16:00 - 22:00 | Friday: 8:00 - 14:00



THE RULES OF THE GAME IN THE BUSINESS WORLD HAVE CHANGED. TODAY WE ARE LOOKING FOR MANAGERS OF A NEW BREED: THOSE WHO CAN MAKE A DIFFERENCE, CREATIVE LEADERS WHO ARE WILLING TO BREAK CONVENTIONS, ENTREPRENEURS WITH THE ABILITY TO THINK DIFFERENTLY AND WHO ARE CAPABLE OF BRINGING ABOUT A REAL CHANGE. ONLY THESE TYPES OF MANAGERS WILL BE ABLE TO THRIVE IN A DYNAMIC AND CHANGING WORLD, AND KNOW HOW TO FACE ANY CHALLENGE THAT MAY STAND IN THEIR WAY."

Prof. Niron Hashai
Dean and Head of the MBA Programs



The Global MBA program empowered me to make the leap from nonprofit and diplomacy work into the Israeli innovation ecosystem. Not only did it introduce me to a vast network of business leaders and seasoned entrepreneurs, but it also equipped me with the tools and confidence to dive into venture evaluation at Israel's biggest VC as an Investment Analyst and, later, the Value Creation Manager for a portfolio of 350+ startups."

Natalie Milstein
Originally from Los Angeles
Senior Associate at Blue Laurel Advisors



The MBA program is a journey, taking you back to the drawing board and inspiring you to blend technology with creativity in ways that can impact all high-tech industries. Through its comprehensive approach, the program encourages you to experiment with various models, fostering unique connections and opening your mind to a universe of endless opportunities."

Rinat Zilberstein
Originally from Israel
AT&T Israel General Manager and VP R&D

REICHMAN UNIVERSITY

FAST FACTS

REICHMAN UNIVERSITY: THE MOST INTERNATIONAL UNIVERSITY IN ISRAEL




 Israel's first and only **private university**

Over **38**  **research institutes** at Reichman University
www.runi.ac.il/research-institutes



Over **38,000** **graduates worldwide**

The Career Center aims to assist alumni in integrating into the professional market, as employers seeking to recruit suitable candidates 

Reichman University created new, academic **interdisciplinary concepts** in the fields of entrepreneurship, counter-terrorism and sustainability - models that are being implemented around the world 

Over **400** lone soldiers studying for full degrees

 The Israeli Council for Higher Education granted Reichman University permission to confer **doctoral degrees**


Over **2,500** Raphael Recanati International School students from over **90** countries make up 1/3 of the Reichman University student body

Reichman University's Alumni Association, with over 38,000 graduates, forms a professional and social alumni community that promotes **networking** from different countries, and strengthens the pride and sense of belonging to Reichman University and its alumni 

 Ranked **no. 1** in Israel for our treatment of **IDF reservists**

AI & BIG DATA TRACK

The AI & Big Data track establishes exceptional managers for leading in the era of data revolution. To reach the top levels of any organization, and to compete effectively in any industry, managers must embrace a data-driven mindset.

In this program, you will acquire knowledge and skills in data analytics and management through courses, workshops, and company projects, while also being exposed to companies and organizations and gaining hands-on experience.

As a graduate, you will apply your leadership potential in creating a startup, running a business, or managing a team. In any of these roles, you will be able to think and speak data to complement the intuitions that would normally guide your managerial actions.

Successful candidates for our exclusive track should be comfortable taking a technological approach to problem solving. They do not, however, have to have a scientific degree or prior knowledge of programming.

We are looking for overachievers with great interpersonal skills and professional attitudes.

PRACTICAL PROJECTS

Students in the AI & Big Data track will have the unique opportunity to work on six-month practical projects - establishing a venture or solving a real-world problem - accompanied by mentors from the industry.



Gail Gilboa
Head, AI & Big Data Track

PARTIAL LIST OF COURSES

Machine Learning for Business

Machine Learning for Business Machine Learning (ML) is changing our lives and businesses. This course prepares you with the relevant technical knowledge to drive growth, innovation, and efficiency in either your new business or existing organization. The focus is on empowering you as a business leader to ask the right questions about whether ML will benefit your business. Using your hands-on experience, you'll create a demo that identifies realistic ML opportunities. ML Solution Based on Python, Pandas Scikit-Learn, GPT, and SQL This course will teach you how to successfully lead ML projects and people, and how to strategically leverage ML for business success.

Data Driven Behavioral Insights

AI & Big Data are changing behavioral science. This course will explore how the two domains complement each other and work together real-life challenges. The course provides the student with in-depth knowledge and tools, Big Data and Statistical Learning Techniques, Behavioral Nudge Science. In addition to practical skills, we will do this through healthcare examples.

SQL

The course covers the theory and practical use of relational database systems and the SQL data language they employ. Working extensively with MySQL 8.0 RDBMS, students learn to analyze data requirements, design a normalized schema, build an efficient database with emphasis on read/write performance and investigate contents' relational databases. Additionally, the course introduces students to the "next generation" of non-relational systems.

Business Intelligence

This course gives an overview of how to encompass intelligence technologies and visual analytics to support decision-making and impact corporate strategy, performance, and competitiveness.

Introduction to Programming with Python

This course provides basic principles of programming in Python, the most popular and intuitive programming language that allows developers to create meaningful programs quickly. No previous background is required.

A full list of all courses will be available to students on the Reichman University website:

<https://www.runi.ac.il/gmba/courses>

Reichman University reserves the right to cancel, alter, or expand the academic programs offered.



The MBA program in AI & Big Data at Reichman University has not only equipped me with technical knowledge, but also with essential managerial skills that enable me to effectively lead and innovate within the product I am a part of. Through courses in strategic management, leadership, and innovation, I have learned how to effectively navigate the complexities of the business world and drive forward-thinking solutions.

Maya Plotnik

Originally from Israel
Product Marketing Manager,
Applied Materials

INNOVATION & ENTREPRENEURSHIP TRACK

The Innovation & Entrepreneurship track is a partnership between Reichman University's Media Innovation Lab (milab) and the Arison School of Business. This unique track is designed for exceptional students with professional experience, who wish to join the global startup ecosystem or improve their career choices within this vibrant community. Students will learn innovation, as well as product and business methodologies, and will have the opportunity to promote new ideas, as either entrepreneurship projects (startup or venture ideas) or intrapreneurships (new products or businesses within an existing company). The track focuses on experiential learning, including guest lectures, informal mentorships and visits to leading companies (led by entrepreneurs, VCs, angel investors, product managers, inventors, and more). Students come from diverse fields, including computer science, engineering, business, law, economics, design, and social sciences, as well as biology, art, and medicine.



Prof. Oren Zuckerman
Academic Director, Innovation & Entrepreneurship Track
Founder and Co-Director,
Media Innovation Lab,
Reichman University



Michal Olmert Naishtein
Executive Director, Innovation & Entrepreneurship Track

LAB: PRODUCT INNOVATION & VENTURE CREATION

In the Lab courses (three consecutive courses) students work in teams to develop a new product and venture from the concept stage.

The Lab experience is based on leading entrepreneurial methodologies, combined with UX and product techniques. Students work closely with leading mentors from the Israeli startup community, including entrepreneurs, investors, and experts in various domains: online marketing, user experience, product management, product validation strategies, and more. Students who choose to develop hardware products, such as IoT and robots, can learn how to use milab's advanced rapid-prototyping tools, including 3D printing, electronics prototyping and sensors, woodshop, metal shop, and biofabrication.

PRACTICUM EXPERIENCE

Students are offered a unique opportunity to experience the startup world from within, by joining early stage startups, accelerators, VCs, or incubators. Students who participate in the practicum program devote 6-8 weekly hours during a four-month period to carrying out professional projects. Former students worked at Microsoft Ventures, Sigma Labs, 8200 EISP, Glilot Capital, OurCrowd, Meron Capital, AIVF, Carbyne, OrCam and many more startups and funds. Our network of collaborators is constantly growing and we tailor opportunities for our students.

Admission to the experiential courses is subject to a screening process that takes place during the course of studies. Participation in these courses is not a requirement for completing studies in the Innovation & Entrepreneurship track.

PARTIAL LIST OF COURSES

Israeli Entrepreneurship Ecosystem

You will be taught how investors evaluate startups: What is more important, the team or the technology? What startup roles are relevant for MBA students? The course includes lectures with guest VCs and angel investors, as well as company visits led by entrepreneurs and heads of accelerators.

Data-Driven Product Management

What is the product manager role in a data-driven startup? What is the product life cycle? You will be taught how PMs validate new product directions. The course includes guest lectures and company visits with PMs from Google, Meta, Taboola, and a variety of startups, as well as with academic data science experts.

Business Communications

You will be taught how to pitch to a management team or to a large audience and how to merge the art and science of interpersonal communication.

Led by TED talk coaches Michael Weitz and Abigail Tenenbaum.

UX Research for Product Innovation

What is User Experience (UX)? You will learn how to leverage UX research methods to better understand users, and how to invent new products that provide value. You will also learn how to validate product ideas before the MVP stage.

Led by Prof. Oren Zuckerman - the track's academic director, founder of Reichman University's Media Innovation Lab, and an HCI (Human-Computer Interface) lecturer and researcher.

Design Thinking

What are the methods designers use to solve problems in a creative way? Can design methodologies help a team work more creatively? You will be taught how design approaches can improve a business's strategy.

Led by Prof. Alex Padwa - an industrial designer who is the former head of the Industrial Design Department at Shenkar College of Engineering and Design.

Systematic Creativity

Are creative thinkers born or made? This course shows how creativity is a skill that can be taught and practiced.

Led by Prof. Jacob Goldenberg - marketing professor at Reichman University and Columbia University and developer of the SIT (Systematic Inventive Thinking) methodology.

Organizational Innovation

What are the best (and worst) practices in innovation and how should one deal with the complex challenge of navigating organizational innovation culture?

Led by Idit Biton - Innovation and Future of Work Specialist; Senior partner at SIT - Systematic Inventive Thinking.

A full list of all courses will be available to students on the Reichman University website: <https://www.runi.ac.il/gmba/courses>

Reichman University reserves the right to cancel, alter, or expand the academic programs offered.



The Innovation & Entrepreneurship track is designed for exceptional candidates from diverse backgrounds who are creative, adventurous, and interested in creating new products and services for the business market."



STUDY TOUR TO NY

In recent years, New York City has developed into what is now called "Silicon Alley," with thousands of technology startups based there. The city is also one of the world's most important business centers, and home to some of the most prominent companies in all sectors. The Study Tour includes visits to startup companies and meetings with entrepreneurs and inspiring leaders from various sectors. The tour offers students a unique opportunity to get a firsthand impression of current trends, new technologies, and innovative business models. We will focus on academic workshops, site visits, discussions and networking to help students gain an up-to-date and holistic perspective of the inner workings of the NYC tech scene.

The cost of the trip is not included in the tuition.



I came back from New York full of inspiration and motivation. Hearing the different startup stories showed me how fortunate I am to be in a situation where so many different opportunities are available to me. Founders with all different backgrounds and motivations proved to us that it is possible to build your own successful business or take your career on a new path. This trip has once again opened my eyes to the fact that we can do so much with our lives, that we should be brave and go off in new ways that challenge us, and make us stronger and more experienced. And if we don't do it all now, when will we do it?"

Charlotte Hetzler,
MBA Graduate



Dr. Sivanie Shiran
PhD, University of Haifa

Faculty Head of Leadership Development in the G/MBA programs

Dr. Shiran is Clinical Psychologist, Jungian Psychoanalyst and Organizational Consultant. Before joining Reichman University she worked at Harvard Business School (HBS) and the Institute for Management Development (IMD) in Switzerland. Her work focuses on the irrational unconscious forces inherent in leadership and engages in executive coaching and organizational facilitation in her consulting practice.

Our unique MBA programs emphasize the combination of theory and practice and focus on the personal development of each student. They do this through a variety of unique extracurricular activities that result in both personal and professional development.

THE EXECUTIVE MENTORING PROGRAM (EMP)

The Executive Mentoring Program gives outstanding students an unusual opportunity to receive personal guidance from experienced senior executives with proven professional and managerial achievements in both the Israeli economy and international markets.

Each mentor guides a group of 6-8 students during the second year of the program.

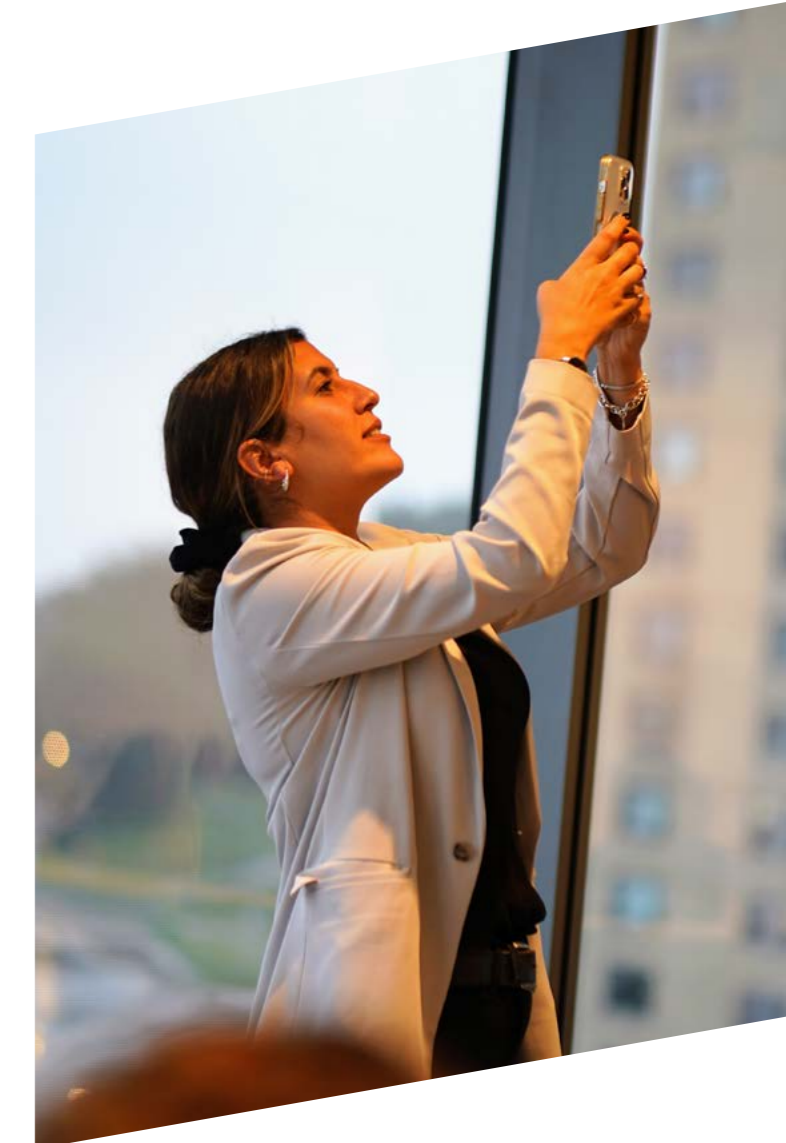
ARISON LEADERSHIP DEVELOPMENT PROGRAM

Successful managers must have more than analytical abilities and sound judgement. To succeed in business they need a deep understanding of what drives people - themselves and others. The Arison Leadership Development Program provides a rich opportunity for students to learn about the unconscious layers of leadership and to identify for themselves their key strengths and development needs.

This program is unique to the MBA programs at Reichman University, and is based on similar programs at Harvard Business School, IMD, and INSEAD. It has a year-round modular structure that allows students to adapt their learning experiences to meet their individual needs and interests. Students are invited to attend lectures and workshops, which give them the opportunity to consult with peers and experts on the the professional dilemmas they face.

LEADERSHIP BEHIND THE SCENES

In this unique interview series, Dr. Sivanie Shiran interviews well-known global business leaders about their personal and professional leadership journeys, allowing students a unique glimpse "behind the scenes" into the human psychology of these business giants.



SELECTED FACULTY

Dr. Nadine Baudot-Trajtenberg, PhD, Harvard University
Deputy Governor, Bank of Israel

Dr. Baudot-Trajtenberg has spent 20 years in the banking industry in Israel and is a leading spokesperson to the investor community on matters of finance, banking, and economic developments. Her interests are: economics of globalization; corporate communication; and the political economy of Israel. Dr. Baudot-Trajtenberg serves on the board of public corporations and public organizations.

Prof. Ron Shachar, PhD, Tel Aviv University; Harvard University
Former Dean, Arison School of Business; Former Head of Marketing, Tel Aviv University; Appointment at the Yale School of Management; Visiting Professor, Duke University

Research focuses on major advertising and branding issues, as well as exploring strategic and marketing related aspects of the entertainment industries and of political campaigns.

Prof. Jacob Goldenberg, PhD, Hebrew University of Jerusalem
Prof. Goldenberg received his PhD from the Hebrew University of Jerusalem, in a joint program of the School of Business Administration and Racah Institute of Physics. He was Professor of Marketing and Head of the Marketing Department at Hebrew University's Jerusalem School of Business Administration. He is a visiting professor at the Columbia Business School and an academic trustee of the MSI. His research focuses on creativity, new product development, diffusion of innovation, complexity in market dynamics, and the effects of social networks. Prof. Goldenberg has published in leading journals and is the new Editor-in-Chief of the *International Journal of Research in Marketing*. In addition, he is an author of two books published by Cambridge University Press.

Dr. Yonat Zwebner, MBA, Reichman University; LLB, Tel Aviv University; PhD, Hebrew University of Jerusalem
Assistant Professor, Marketing, Arison School of Business, Reichman University

Prior to joining Reichman University, Dr. Zwebner was a postdoctoral research fellow at the Wharton School of the University of Pennsylvania. Her research examines social influences, such as the implications of being observed while making a consumption decision, the effects of justifying decisions, and the strong influence of a social tag. In one stream of her research, she explores how consumers are averse to being observed while making a decision, and how such an observation threatens one's sense of autonomy and free will. In addition, she examines how exposing a reason for a prosocial decision influences that decision. In a second stream of her research, she investigates how a social tag, our given name, is so influential that it actually influences the way we look. Dr. Zwebner's research has been published in the *Journal of Personality and Social Psychology* and the *Journal of Consumer Psychology*. It has won several awards, including finalist for the 2017 SESP best dissertation award.

Prof. Dan Segal, PhD, New York University

Dr. Segal has taught managerial accounting and financial accounting at top North American universities, including the University of Toronto, where he served as assistant professor. Dr. Segal has published research papers in leading accounting journals. His primary research interests include earnings management, valuation, and the effects of accounting information on economic decisions.

Prof. Niron Hashai, PhD, Tel Aviv University

Dean and Head of the MBA Programs, Reichman University; Professor, Arison School of Business, Reichman University

Prof. Hashai's research interests include: theory of the multinational corporation, technological innovation, diversification, and growth patterns of high technology firms. His research has been published in top strategy, management, international business and innovation journals, including: *Journal of International Business Studies*, *Journal of Management*, *Research Policy*, *Strategic Management Journal*, and *Strategy Science*. Professor Hashai is also a visiting Professor at New York University, and has held visiting positions at the University of Oxford and Leeds University Business School, among other institutions. Before joining Reichman University, Professor Hashai was a tenured faculty member at Hebrew University's School of Business Administration, where he served as Albertson-Waltuch Chair in Business Administration; Vice Dean; Head of the Asper Center for Entrepreneurship; and Head of the Strategy and Entrepreneurship area, among other roles.

Prof. Yaniv Grinstein, PhD, Carnegie Mellon University

Head, Master's Program in Financial Economics, Reichman University; Head, MBA Research Program, Reichman University; Head, Reichman University BA programs in Finance

Prof. Grinstein is a Professor of Finance at Reichman University and an Adjunct Professor of Finance at Cornell University in the U.S. Professor Grinstein's research interests are in corporate finance and corporate governance. His research was published in finance journals, including *The Journal of Finance*, *The Journal of Financial Economics*, *Management Science*, *Review of Finance*, and others. Prof. Grinstein serves as a research associate at the European Corporate Governance Institute and as a journal editor for *Corporate Governance: An International Review*. He is the recipient of the Research Excellence Award from Reichman University in 2016; the Best Teacher Award, Cornell Executive MBA Program, 2013, 2016, 2018; the Management Science Distinguished Service Award in 2014; the Best Paper Award from *The Journal of Financial Intermediation* in 2006; and the Best Paper in Corporate Finance Award from the Southwestern Finance Association in 2005. Between the years 2006-2007 he was a visiting academic scholar at the Securities and Exchange Commission.

APPLICATION, ADMISSION, TUITION

APPLICATION PERIOD

The application period for the 2024-2025 academic year is **November 15, 2023 - August 31, 2024**.

The application period for students required to take MBA preparatory courses ends on **July 31, 2024**.

Due to the competitive nature of the admissions process, we recommend that applicants prepare their application well in advance of the deadlines.

ADMISSION CRITERIA

- Quantitative undergraduate degree from a recognized academic institution
- Undergraduate GPA of 80% or 3.0 and above
- Demonstrated professional experience of at least three years after the undergraduate degree
- Interview (online or in person)
- Prerequisite courses are required in Statistics, Mathematics, and Economics. Students missing these courses will be required to take preparatory courses over the summer.
- Candidates who do not have a quantitative background may be required to take the GMAT.

APPLICATION PROCESS

The application process consists of two stages:

Stage 1 Your application will be evaluated by the Admissions Committee based on the submitted material (essays, official transcripts, etc.).

Stage 2 Applicants who successfully pass Stage 1 will be invited to a personal interview with the Admissions Committee. Applicants living outside of Israel may be interviewed by phone, video conference, or by a visiting professor.

The Admissions Committee will evaluate and reach decisions regarding each applicant's candidacy. Applicants will be informed of their status once it is decided.

ONLINE APPLICATION

Complete the online application form at <https://forms.runi.ac.il/#/Public/Registration?lang=en&form=MA>

Please note your application must include:

- Official transcripts of previous academic undergraduate and graduate studies. Transcripts must bear the official stamp of the issuing institution. If you do not send the original transcript, scanned photocopies of the original documents will be accepted if properly notarized.*
- Detailed CV in English describing professional experience
- Two letters of recommendation in English, preferably one from a source who can comment on professional experience
- Candidates who do not have a quantitative degree must submit an official quantitative GMAT score.
- Copy of passport or identity card
- A short biography/Bio Form
- Essay/Questionnaire

*An official, notarized English translation must be submitted for all transcripts not originally issued in English.

FEES & TUITION

- The application fee is **NIS 300** (non-refundable).
- The down payment is **NIS 9,900**. Applicants must pay the fee to secure their place in the program after being accepted. Once the down payment has been received, the applicant's place is secured and confirmed.
- The tuition fee for the entire program is **NIS 104,900**.

Reichman University reserves the right to change all tuition and fee rates without prior notice.

FINANCIAL AID

MERIT SCHOLARSHIP

RRIS awards excellent students with merit scholarships based on their previous performance. Students do not apply for this scholarship. The Admissions Office will notify you if relevant.

FREE APPLICATION FOR FEDERAL STUDENT LOANS (FAFSA)

US citizens are eligible to apply to borrow FAFSA Stafford loans as part of the Direct Loans Programs and/or Sallie Mae. For students enrolled in the 2024-2025 academic year, the deadline to apply for loans is **April 1st, 2025**. Our school code is G40703, and the school name is Raphael Recanati International School. For further information and to start the process, please contact Rina Haller in our US office at Rina@aforu.org.

GRANT FOR NEW IMMIGRANTS

The Government of Israel offers financial assistance for graduate school tuition to new immigrants under the age of 30, provided the immigrant does not already have a graduate degree from abroad and the program is recognized by the Student Authority. Students must begin their graduate studies within three years of their Aliyah date (not including army service), in order to be eligible for this assistance.

https://www.gov.il/en/Departments/Units/students_authority_maya

MASA

Jewish tourists between the ages of 18-30 who have not been in Israel on a prior long-term program are eligible for grants and scholarships through the Masa Project.

Please note: once you make Aliyah you are not eligible for this grant so please check this before making Aliyah! More information at: www.masaisrael.org



SAP (Students Assistance Programs)

Canadian students interested in loans and grants from the Canadian government can get information at <https://www.canada.ca/en/services/benefits/education/student-aid/grants-loans/province-apply.html>

Financial aid is also available through the Free Loan Association for the Greater Toronto area (<https://jewishtoronto.com/directory/jewish-free-loan-toronto>)

FOR MORE INFORMATION:

<https://www.runi.ac.il/en/schools/rris/admissions/graduate/financial-aid-and-scholarships/>

APPLY ONLINE AT

<https://forms.runi.ac.il/#/Public/Registration?lang=en&form=MA>



✓ Networking is the name of the game!
To date, there are more than 38,000 Reichman University graduates from over 90 countries. This gives students a unique opportunity to meet people from different backgrounds and learn about other nations and cultures, and to establish friendships that last a lifetime. This also creates a global network that provides our graduates with an advantage throughout their professional career.

✓ Our small classes create a more intimate learning setting, which allows students to get to know each other and the staff. Our philosophy is that our students are our partners.

✓ Reichman University is one of the most prestigious universities in Israel. Employers seek Reichman University graduates because they come with practical tools and hit the ground running. Reichman University operates a Career Development Center that aims to prepare students and alumni for the job market, and to provide them with the tools to find suitable employment both before and after they graduate.

✓ Reichman University offers a wide range of extracurricular activities: sports, debate club, Model UN, Israel advocacy, JLIC-RRIS Friday night dinners, shiurim, mincha club, choir, band, and much more.

✓ The Raphael Recanati International School provides very special care for its students. We are the largest academic absorption center in the country. We are especially proud that we are home to more than 400 lone soldiers, who are currently studying here.

✓ 1/3 of Reichman University students are international, making us the most international university in Israel for full-degree students. Israeli students serve as counselors for first-year students in order to help them find their way around and get to know the system.

✓ Reichman University was ranked number one in student satisfaction for quality teaching for four consecutive years, in a nationwide survey conducted by Israel's Council for Higher Education. We are the first non-government-subsidized academic institution to grant doctoral degrees.

WHY REICHMAN UNIVERSITY ?

VISA & STATUS ASSISTANCE



Students are responsible for clarifying and establishing their status in Israel, and can turn to the Raphael Recanati International School staff for advice and assistance. All students must clarify their status and eligibility for a student visa (A-2), or Israeli citizenship, in advance before arriving to Israel, with the Israeli embassy or consulate in their country of origin. International students who are children of an Israeli parent must settle all matters, such as deferment of military service, with the nearest Israeli embassy or consulate. For students considering immigration to Israel. The Jewish Agency provides advice and assistance: www.jewishagency.org/Aliyah/, or for students from North America/UK: www.nbn.org.il

CAREER CENTER



The Career Center strives to prepare students to enter the workplace and help them find employment opportunities by providing counseling, placement, and informational services. It is tailored to meet the specific needs of the students and graduates of each of Reichman University's schools, according to the relevant market. These services include personal career counseling and assistance, including one-on-one LinkedIn sessions, as well as lectures and workshops on job-seeking strategies, LinkedIn, and interviews. In addition, the Career Center creates recruitment and networking opportunities such as job fairs and employer meetings. The center also maintains an updated listing of hundreds of job openings in Israel for students and graduates.

www.runi.ac.il/career/eng

HEALTH INSURANCE



All Reichman University students are required to have comprehensive health insurance coverage throughout the duration of their studies. Reichman University cannot cover medical costs or take responsibility for students who do not have insurance. You may purchase your own health insurance policy to cover your medical needs while in Israel, or purchase the UMS HAREL YEDIDIM insurance policy for international students, offered by Reichman University (RUNI). If you are an Israeli resident covered by Israel's National Health Insurance (Bituach Leumi), you do not need any additional health insurance. The insurance plan with HAREL YEDIDIM provides comprehensive health coverage for *\$1,600 USD per academic year, which will be charged at the beginning of the year. In order for students to have continuous coverage, the HAREL YEDIDIM policy will be automatically renewed from one academic year to the next, until the end of the program, unless the student notifies the school in writing that they have an alternative health insurance and wishes to cancel.

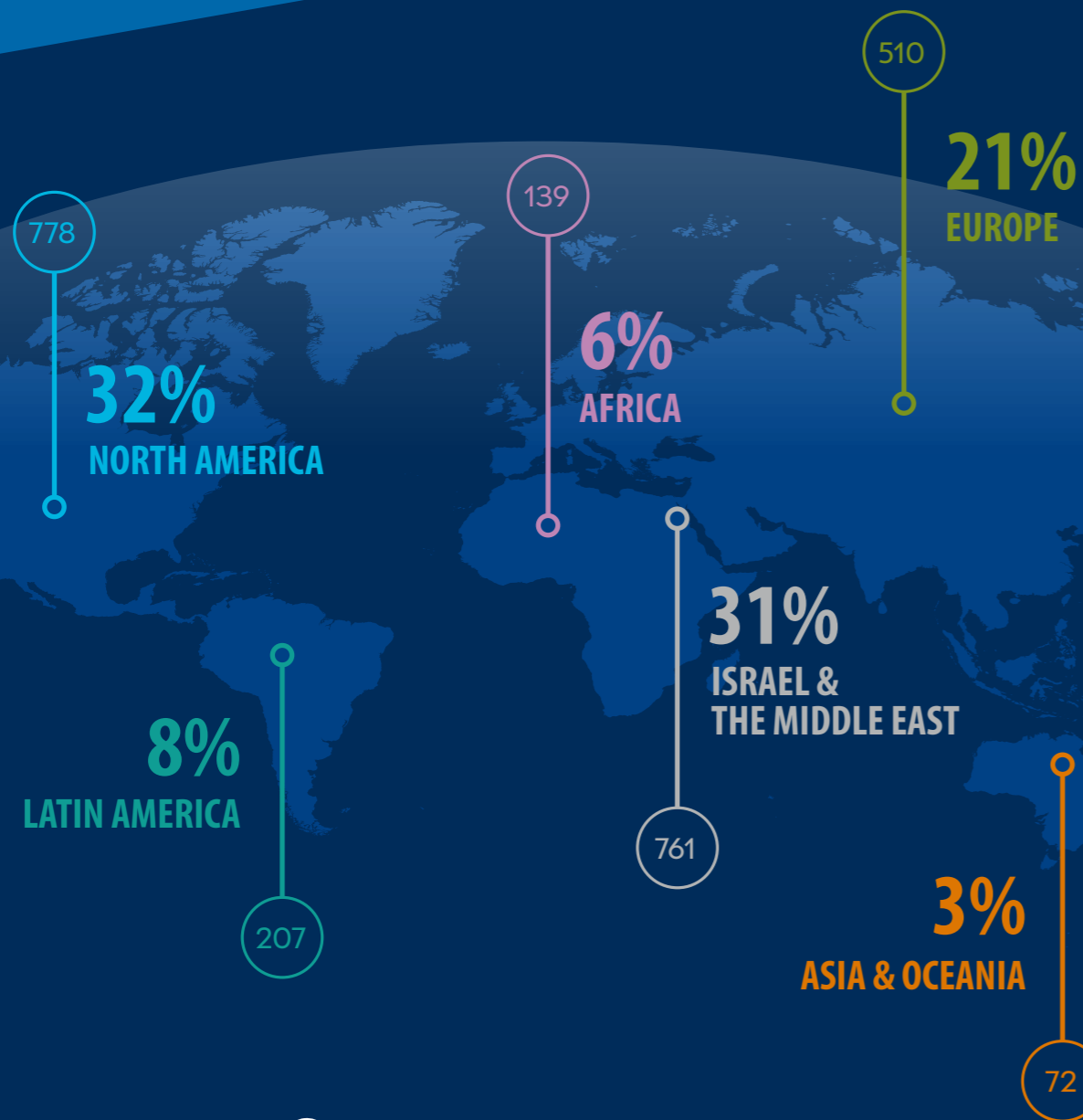
Please note that the HAREL YEDIDIM health insurance plan does not cover pre-existing conditions.

For more information: rriis.insurance@runi.ac.il

* Rates are subject to change according to insurance company rate fluctuations.



RRIS GLOBAL VILLAGE



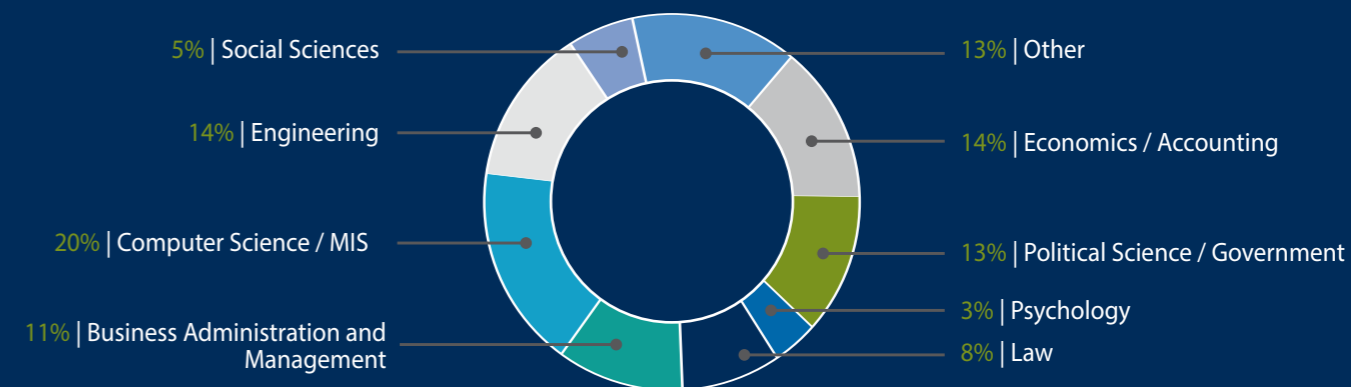
30%

OF THE STUDENT POPULATION OF REICHMAN UNIVERSITY ARE INTERNATIONAL STUDENTS.
RRIS IS THE LARGEST ACADEMIC ABSORPTION CENTER IN ISRAEL.

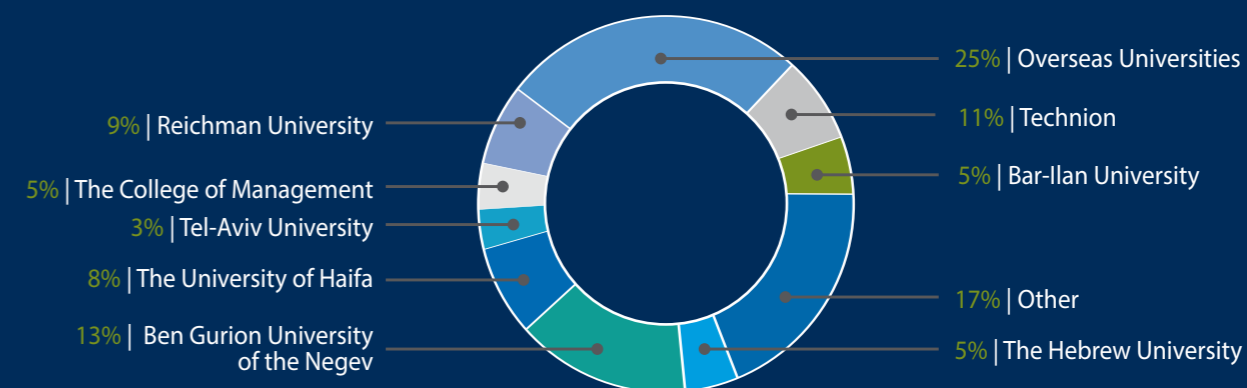
STUDENTS IN THE GLOBAL MBA

Average years of employment after completion of first degree **6**
Average age **31**

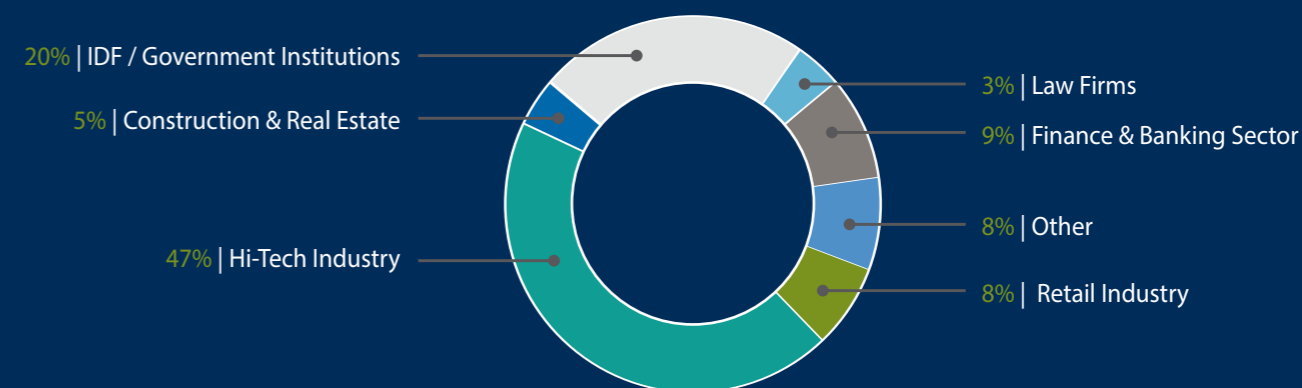
ACADEMIC BACKGROUND



PRIOR ACADEMIC INSTITUTION



PRIOR JOB SECTORS



ACADEMIC CALENDAR 2024-2026

Opening Event - November 8th, 2024

Mini Semester 1	November 10 - December 20, 2024
Mini Semester 2	January 5 - February 14, 2025
Mini Semester 3	March 2 - April 11, 2025
Purim break	March 14, 2025
Pesach break	April 13-18, 2025
Memorial Day and Independence Day	April 30 - May 1, 2025
Shavuot break	June 2, 2025
Mini Semester 4	May 4 - June 13, 2025
Mini Semester 5	June 29 - August 8, 2025
Rosh Hashanah break	September 22-24, 2025
Yom Kippur break	October 1-2, 2025
Succoth break	October 6-14, 2025
Mini Semester 6	November 9 - December 19, 2025
Mini Semester 7	January 4 - February 13, 2026
Mini Semester 8	March 1 - April 17, 2026
Purim break	March 3, 2026
Pesach break	April 1-7, 2026
Memorial Day and Independence Day	April 20-22, 2026
Shavuot break	May 21-22, 2026
Mini Semester 9	May 10-26, 2026

- New York Study Tour dates will be publicized at the start of the school year.
- Exams will take place between mini semesters, Friday mornings, or weekday afternoons.
- The schedule is tentative and subject to change

Design Guy Tamir - guy@2plustudio.com

Production Adaya Hoffman

Editor Naama Oren

Photography Iya Volkova, Adi Cohen Zedek, Alon Gilboa, Oren Shalev, Ran Yitzhak, Maya Gershon



Raphael Recanati
International School

ADMISSIONS DEPARTMENT
(Israeli Students)

REICHMAN UNIVERSITY

PO Box 167, Herzliya, Israel 46150

Tel +972 9 952 7300

Fax +972 9 960 2770

master@runi.ac.il

Israeli students can register online at

[https://forms.runi.ac.il/#/Public/
Registration?lang=en&form=MA](https://forms.runi.ac.il/#/Public/Registration?lang=en&form=MA)

ADMISSIONS DEPARTMENT
(International Students)

REICHMAN UNIVERSITY

PO Box 167, Herzliya, Israel 46150

Tel +972 9 960 2700

Fax +972 9 952 7334

rris.master@runi.ac.il

NORTH AMERICA

The Raphael Recanati

International School

c/o American Friends of Reichman University

142 W. 57th Street 11th floor

New York, NY 10019

Tel + 1 212-213-5962

Fax +1 212-213-6436

rris.us@runi.ac.il

International students can register online at

[https://forms.runi.ac.il/#/Public/
Registration?lang=en&form=MA](https://forms.runi.ac.il/#/Public/Registration?lang=en&form=MA)

Submit your application online >> <https://forms.runi.ac.il/#/Public/Registration?lang=en&form=MA>