



MA IN

FINANCIAL ECONOMICS

LIVE IN ISRAEL, STUDY IN ENGLISH

ARISON SCHOOL OF BUSINESS
TIOMKIN SCHOOL OF ECONOMICS

2023-2024

CONTENTS

WELCOME FROM THE HEADS OF THE PROGRAM 4

PROGRAM HIGHLIGHTS 5

REICHMAN UNIVERSITY FACTS 6

CURRICULUM 8

ALUMNI 9

ADVANCING YOUR CAREER 10

FACULTY 12

APPLICATION, ADMISSION, TUITION 14

FINANCIAL AID 15

WHY REICHMAN UNIVERSITY? 16

HEALTH INSURANCE, VISA STATUS, CAREER CENTER 17

RRIS GLOBAL VILLAGE 18

ACADEMIC CALENDAR 19



Reichman University was founded with the aim of nurturing future leaders. In just twenty-seven years, we have created a pioneering and innovative academic center. Our students are imbued with a commitment to excellence and original thinking. 'The university of the future,' as we see it, has to prepare its students for a constantly changing world by being able to innovate skillfully, to dare, and to initiate. We believe that the knowledge and tools acquired at Reichman University support personal and professional goal fulfillment and enable our graduates to tackle the challenges of our global reality."

A handwritten signature in black ink, reading "Uriel Reichman".

Prof. Uriel Reichman

Founding President and Chairperson of the Board of Directors, Reichman University



WELCOME FROM THE HEADS OF THE PROGRAM

The MA in Financial Economics is an integral part of academic and research advancement at Reichman University. The program is jointly run by the Arison School of Business and the Tiomkin School of Economics, two centers of excellence offering a notable combination of academic theory and industry expertise.

The MA in Financial Economics is designed to provide students with in-depth knowledge of finance and economics, and with tools that will enable them to cope with the issues and challenges of the global business-economic environment.

Our graduates hold a diverse array of positions, including:

- Bankers
- Data analysts
- Financial analysts
- Investment managers
- Economic consultants
- Innovators in the fintech industry
- Finance professionals in industrial firms
- Analysts in government offices
- Doctoral students



THE MA IN FINANCIAL ECONOMICS IS DESIGNED TO PROVIDE STUDENTS WITH IN-DEPTH KNOWLEDGE OF FINANCE AND ECONOMICS, AND WITH TOOLS THAT WILL ENABLE THEM TO COPE WITH THE ISSUES AND CHALLENGES OF THE GLOBAL BUSINESS-ECONOMIC ENVIRONMENT."



PROF. ZVI ECKSTEIN
DEAN,
TIOMKIN SCHOOL OF
ECONOMICS



PROF. YANIV GRINSTEIN
FINANCE PROFESSOR,
ARISON SCHOOL OF
BUSINESS



**DR. Yael EISHENTAL-
BERKOVITZ**
FINANCE FACULTY,
ARISON SCHOOL OF BUSINESS

PROGRAM HIGHLIGHTS



- The program is designed for candidates from Israel and abroad who have strong analytical skills and an interest in economics and financial markets. Suitable candidates include outstanding graduates from economics and business programs, as well as engineers, computer science majors, and graduates of other exact science disciplines. Candidates from other disciplines will be evaluated on a case-by-case basis.
 - In the full-time program (14 months), classes are held on Monday and Thursday afternoons and Friday mornings. There are 6 mini semesters of 6 weeks each, with two-week exam periods in between. Each mini semester includes 4-5 courses. Refer to the academic calendar on page 19 for additional information.
 - Students can choose to study in a part-time format, and spread out their studies over a two-year period (26 months). In the part-time program each mini semester includes 2-3 courses.
- The curriculum is divided into foundation courses, specializations, and a final project/ thesis.

Foundation Courses

Analytical Tools
Economics and Finance Foundations

Specializations

Capital Markets
Corporate Finance
Fintech and Data Analytics
Banking and Monetary Policy
Research Track

Final Project/Thesis



REICHMAN UNIVERSITY

FAST FACTS



Israel's
first and only

private university



Over **30**
research institutes
at Reichman University

www.runi.ac.il/research-institutes



Over **35,000**
graduates
worldwide

The Career Center

aims to assist alumni in
integrating into the professional
market, as well as to
assist employers who
are seeking to recruit
suitable candidates



Over **2,500**
Raphael Recanati International
School students from over
90 countries make up
1/3 of the Reichman
University student body



The Israeli Council for Higher
Education granted Reichman
University permission to confer

doctoral degrees



REICHMAN UNIVERSITY: THE MOST INTERNATIONAL UNIVERSITY IN ISRAEL

Reichman University created new, academic **interdisciplinary concepts** in the fields of entrepreneurship, counter-terrorism and sustainability - models that are being implemented around the world



Over **300** Lone Soldiers studying for full degrees

Reichman University's Alumni Association,

with over 35,000 graduates, forms a professional and social alumni community that promotes **networking** from different countries, and strengthens the pride and belonging to Reichman University and the alumni



Ranked **no. 1** in Israel for our treatment of **IDF reservists**



CURRICULUM

Students are required to take 51 credits and to submit a final project; 37 credits are required courses and 14 credits are elective courses. Courses are generally 2 credits each. Of the 14 credits, students can take up to 4 credits from other master's programs at Reichman University. (Some restrictions apply.)

Foundation Courses

Analytical Tools (required)

- Mathematics for Financial Economists ¹
- R - Online Course and Statistical Software Workshop
- Data Analysis 1 & 2

Economics and Finance Foundations (required)

- Microeconomics and Macroeconomics Foundations ²
- General Equilibrium Under Uncertainty
- Strategic Games
- Dynamic Macro and Monetary Economics
- Central Bank Policy: The Fed, ECB and BOI
- Finance Foundations and Capital Markets
- Introduction to Corporate Finance
- Financial Accounting 1 & 2
- Investments
- Options and Futures
- Bond Markets
- Final Project / Thesis (required)

Specializations (Choice of 14 credits)

- Practicum

Banking, Macroeconomics and Monetary Policy

- Economic Growth
- Risk Management in Financial Institutions
- International Finance

Financial Markets

- Advanced Bond Markets
- Topics in Global Economics
- Active Portfolio Management Using Machine Learning
- Research Workshop in Empirical Asset Pricing

Corporate Finance

- Valuation
- Topics in Corporate Finance
- Financial Statement Analysis*

Fintech and Data Analytics

- Fintech - Finance, Business and Technology
- Programming in Python*
- Data Science for Finance: Foundations
- Data Science for Finance: Applications
- Blockchain Finance - Cryptocurrencies and Decentralized Finance

¹ Students with a strong background in mathematics may be exempt from the course. The course is offered in August-September.

² Students who did not major in Economics in their undergraduate degree are required to take these courses. The courses are offered in October.

* Jointly taught with other graduate programs. Scheduling may not coincide with the MAFE schedule. Some restrictions may apply.

Curriculum is tentative and subject to change.

Research Focus

Students who are interested in a research focus may undertake a thesis instead of the final project, and are required to take only 5 elective courses. Students with a research focus are encouraged to select the following electives:

- Research Workshop in Empirical Asset Pricing
- Academic Workshop
- Empirical Research Strategies

The procedure for doing a thesis involves the submission of a thesis proposal by September of the last year of studies.

Once the proposal is approved, the student has until completion of all courses to submit the thesis.

Reichman University reserves the right to cancel, alter, or expand the academic programs offered.

ALUMNI



Matan Malka
*Managing Partner,
Grit Mind Partners*

Israel 




Noa Drezner
*Financial Services Partnerships,
Amazon Web Services (AWS)*

Israel 



Zsofia Boros
*Analyst,
YL Ventures*

Hungary 



Shani Breslauer
*Investment Analyst,
EBRD*

Israel 




Ido Spector
*PhD Candidate,
Stanford University*

Israel 



Felipe Sichel
*Partner and Strategist,
Banco Modal*

Brazil 





ADVANCING YOUR CAREER

The MAFE program helps students with their career development. We pride ourselves on positioning our students in excellent placements both in Israel and abroad.

Our graduates work in organizations such as Citi, Bank Leumi, Bloomberg, Deloitte, Barak Capital, Modal Capital, Strauss, Psagot, BDO, the Antitrust Authority, the Ministry of Finance, as well as at various fintech companies.

Several of our graduates have gone on to pursue their PhD degrees in universities such as Stanford and UCLA.

PRACTICUM

Students are encouraged to take the Practicum elective course. Headed by Prof. Ronen Israel, this course introduces students to the financial industry. The practicum includes:

- guest lectures by prominent figures from the finance industry;
- visits to banks, investment houses, and financial divisions of large industrial firms; and
- a study trip to London.



STUDY TRIP TO LONDON

As part of the Practicum, students visit London's financial center. The visit is scheduled between mini semester 5 and mini semester 6, and it includes visits to financial institutions such as Goldman Sachs, Bloomberg, Citi, BlackRock, Merrill Lynch, and others. Students meet with senior executives and give topical presentations. This trip also provides an opportunity for students to network and for the companies to provide information regarding career opportunities abroad. Costs of the trip are not included in the tuition.

INTERNSHIPS

The program offers internship opportunities to students toward the end of their course of studies. Internship length may vary. Past student internship placements have included Bloomberg, Brevan Howard, Citi, Bank Leumi, Azrieli, Deloitte, the Israeli Treasury Department, and others. Please note that the internship placement process is competitive.

STUDENT EXCHANGE PROGRAM

The MA in Financial Economics program has an exchange agreement with the MA program in Quantitative Finance at the University of Washington, St. Louis. Students who participate in the exchange program study in St. Louis from August to December, towards the end of their studies.



FACULTY

(in alphabetical order)

Prof. Doron Avramov, PhD, Wharton School of the University of Pennsylvania

Professor of Finance, Reichman University; Former Professor, Hebrew University of Jerusalem; Former Professor, University of Maryland

Areas of Expertise Risk Management; Derivatives Modeling

Courses Research Workshops; Final Project/Thesis Workshop

Dr. Eric Berger, PhD, Harvard University

Risk Manager, Eagle Investment Solutions; Former Chief Risk Officer, Oasis; CEO, Bloomberg/Israel

Areas of Expertise Risk Management; Derivatives Modeling; Algorithmic Trading; Mathematical Finance

Courses Investments

Prof. Jacob Boudoukh, PhD, Stanford GSB

Professor of Finance, Reichman University; Formerly with Stern School of Business, NYU; Formerly with the National Bureau of Economic Research

Areas of Expertise Asset Pricing; Investment Management; Risk Management; Fixed Income; Currencies; Derivatives

Courses Advanced Fixed Income; Risk Management

Prof. Zvi Eckstein, PhD, University of Minnesota

Former Deputy Governor, Bank of Israel; Dean, Tiomkin School of Economics, Reichman University; Co-Head, MAFE Program, Reichman University

Area of Expertise Macroeconomic Policy

Courses Global Monetary and Financial Stability; Final Project/Thesis Workshop

Dr. Yael Eisenthal-Berkovitz, PhD, Columbia University

Adjunct Faculty (Finance), Co-Head of MAFE Program, Reichman University; Quantitative Investing, Eagle Labs, Barclays, Goldman Sachs; Software Engineer, IBM

Areas of Expertise Asset Pricing; Portfolio Management; Fixed Income; Alternative Credit; Fintech

Courses Options and Futures

Prof. Itzhak Gilboa, PhD, Tel Aviv University

Professor of Economics, Tel Aviv University and HEC Paris

Areas of Expertise Decision Theory; Game Theory; Consumer Theory

Courses Microeconomics 1

Prof. Yaniv Grinstein, PhD, Carnegie Mellon University

Professor of Finance, Reichman University; Co-Head, MAFE Program, Reichman University; Formerly Tenured Faculty, Cornell University; Visiting Faculty, Wharton School of the University of Pennsylvania; Visiting Academic Scholar, Securities and Exchange Commission

Areas of Expertise Corporate Finance; Corporate Governance

Courses Finance 1; Topics in Corporate Finance

Dr. Samer Haj Yehia, PhD, MIT

CFA; Former Senior Executive, GMO, Fidelity, AG, and Deloitte; Chairman of the Board, Bank Leumi; Chairman, Audit Committee, Hadassah Hospital; Consultant in Economic Strategy, Business Development, Investment Management, Banking and Capital Markets

Areas of Expertise Global Banking; Investment Management; Capital Markets Covering Multi-assets Classes from Multidisciplinary Perspectives - Management, Legal, Accounting, Finance and Economics

Courses Fixed Income and Derivatives

Prof. Zvi Hercowitz, PhD, University of Rochester

Professor of Economics, Reichman University; Former Professor, Tel Aviv University; Former Consultant, Research Department, Bank of Israel; Visiting Scholar, Federal Reserve Banks of Chicago, Minneapolis and Richmond

Area of Expertise Macroeconomics

Courses Macroeconomics 1

Prof. Ronen Israel, PhD, Northwestern University

Former Finance Professor at Carnegie Mellon University; Former Finance Professor at University of Michigan; Former Director, Bank Hapoalim; Former Director, Mizrahi-Tefahot Bank

Area of Expertise Corporate Finance

Courses Practicum in Financial Economics

Dr. Doron Israeli, PhD, Stanford University

Senior Lecturer, Accounting, Reichman University; Expert on Financial Reporting, Stock Pricing Efficiency and Quantitative Methods in Finance

Areas of Expertise Role of Financial Reporting in Capital Markets; Effects of Capital Markets Frictions and Human Cognitive Constraints on Stock Pricing Efficiency; Corporate Investment Policy

Courses Econometrics I; Econometrics II

Prof. Shimon Kogan, PhD, University of California, Berkeley

Associate Professor of Finance, Reichman University; Former Faculty, Carnegie Mellon University and the University of Texas, Austin; Former Visiting Professor, MIT

Areas of Expertise Behavioral Finance; Empirical Asset Pricing; Experimental Economics

Courses Fintech - Finance, Business & Technology; Workshop in Artificial Intelligence

Prof. Ron Lazer, PhD, New York University

Adjunct Professor, Accounting and Control, INSEAD; Professor and Accounting Department Chair, The Academic Center of Law and Science, Sha'arei Mishpat, Israel

Areas of Expertise Financial Accounting and Reporting; Value Relevance of Accounting Information; Analyst Forecasts and Effects of Regulation, Companies' Valuations and Voluntary Disclosures

Courses Financial Accounting 1; Financial Accounting 2

Prof. Leonardo Leiderman, PhD, University of Chicago

Former Chief Economic Advisor, Bank Hapoalim; Senior Director, Bank of Israel; Head of Emerging Markets Economics, Deutsche Bank

Areas of Expertise International Finance; Central Banking; Emerging Markets; Macroeconomic Policy

Courses International Finance

Dr. Oren Levintal, PhD, Hebrew University of Jerusalem

Senior Lecturer, Tiomkin School of Economics, Reichman University

Area of Expertise Macroeconomics

Courses Final Project/Thesis Workshop

Prof. Omer Moav, PhD, Hebrew University of Jerusalem

Professor, Economics, Reichman University; Former Professor, Economics, Hebrew University of Jerusalem; Former Head, Advisory Board, Israeli Ministry of Finance; Professor of Economics, University of Warwick

Areas of Interest Economic Growth and Development

Courses Economic Growth; Academic Workshop

Dr. Tal Mofkadi, PhD, Tel Aviv University

Visiting Lecturer, University of Amsterdam, Vienna University and Nagoya University of Commerce and Business

Areas of Expertise Asset Pricing; Corporate Finance and Risk Management

Courses Valuation

Prof. Zvi Neeman, PhD, Northwestern University

Former Visiting Professor, Economics, Yale University; Former Head, Berglas School of Economics, Tel Aviv University

Areas of Expertise Game Theory; Information Economics; Microeconomic Theory; Law and Economics; Environmental Economics

Courses Microeconomics II: Games with Incomplete Information

Prof. Yona Rubinstein, PhD, Hebrew University of Jerusalem

Areas of Expertise Economics; Econometrics

Courses Empirical Research Strategies for Financial Economics

Dr. David Woo, PhD, Columbia University

Head, Global Rates and Currencies Research, Bank of America; Researcher, World Business Markets, Merrill Lynch

Areas of Expertise Macroeconomics; International Finance

Courses Topics in Global Economics



APPLICATION, ADMISSION, TUITION

APPLICATION PERIOD

The application period for the academic year starting autumn 2023 is **November 15, 2022 - August 31, 2023**.

The application period for students required to take preparatory courses ends on **July 31, 2023**.

Due to the competitive nature of the admissions process we recommend that applicants prepare their application well in advance of the deadlines.

ADMISSION CRITERIA

- Completed undergraduate degree from a recognized academic institution, including at least two semester-long courses of undergraduate-level Calculus and two semester-long courses of undergraduate-level Statistics
- Undergraduate GPA of 3.0 or 80% and above
- Strong quantitative background (Preference will be given to students with undergraduate degrees in Computer Science, Economics, Business, Exact Sciences, and Engineering)
- Interview either online or in person
- Students are required to take preparatory courses in Mathematics and Economics, which are given before the start of the academic year (additional costs apply). Students are required to pass the preparatory courses in order to begin the program.
- Students are exempt from the preparatory course in Economics if their undergraduate degree is in Economics. Students are exempt from the preparatory course in Mathematics if their undergraduate degree is in an exact science (Computer Science, Engineering, Math, Physics).

APPLY ONLINE AT

<https://forms.runi.ac.il/#/Public/Registration?lang=en&form=MA>

ONLINE APPLICATION

Complete the online application form, including essays, recommendation letters, transcripts and documents at <https://forms.runi.ac.il/#/Public/Registration?lang=en&form=MA>

Your application must include:

- Official transcripts of previous academic undergraduate or graduate studies. Please note: Applicants must have a final GPA of at least 3.0 or 80%. Transcripts may be scanned, but they must bear the official stamp of the issuing institution. Scanned photocopies of the original documents will be accepted only if properly notarized.*
 - Official diploma
 - Copy of passport or identity card
 - Curriculum Vitae (CV)/Resume in English
- * *An official, notarized English translation must be submitted for all transcripts not originally issued in English.*

APPLICATION PROCESS

The application process consists of two stages:

Stage 1

Your application will be evaluated by the Admissions Committee, based on the submitted materials.

Stage 2

Applicants who successfully pass Stage 1 will be invited to a personal interview with the Admissions Committee. Applicants living outside Israel may be interviewed via Zoom or by phone.

TUITION & FEES

- The application fee is **300 NIS** (non-refundable)
- The down payment is **NIS 9,900** and applicants must pay the fee to secure their place in the program after being accepted. Once the down payment has been received the applicant's place is secured and confirmed.
- The tuition for the entire MA Financial Economics program is **NIS 77,900**.

Reichman University reserves the right to change all tuition and fee rates without prior notice.

FINANCIAL AID

MERIT SCHOLARSHIP

RRIS awards a limited number of excellent students with merit scholarships, based on their previous academic achievements. There is no need to apply; all students are automatically considered and will be notified by the Admissions Office if relevant.

FREE APPLICATION FOR FEDERAL STUDENT LOANS (FAFSA)

American students are eligible for Stafford Loans as part of the Direct Loans Program. Students can register online at: <https://studentaid.gov> from October 1, 2023 until April 1, 2024. Our school code is G40703. Please email rina@afdc.org once you receive your Student Aid Report (SAR).

For further information: www.runi.ac.il/fafsa

FOR MORE INFORMATION

<https://www.runi.ac.il/en/schools/rris/graduate/pages/financial-aid.aspx>

GRANT FOR NEW IMMIGRANTS

The State of Israel offers financial assistance for graduate school tuition to new immigrants under the age of 30, provided the immigrant does not already have a graduate degree from abroad and the program is recognized by the Student Authority. Students must begin their graduate studies within three years of their aliyah date (not including army service), in order to be eligible for this assistance.

https://www.gov.il/en/Departments/Units/students_authority_maya

MASA

Jewish students between the ages of 18-30 who have not previously been on a long-term program to Israel and have not made aliyah are eligible for a onetime grant from Masa towards tuition.

www.masaisrael.org



SAP (Students Assistance Programs)

Canadian students interested in loans and grants from the Canadian government can get information at

<https://www.canada.ca/en/services/benefits/education/student-aid/grants-loans/province-apply.html>

Financial aid is also available through the Jewish Free Loan for the Greater Toronto area (<https://www.jewishcanada.org/regional/jewish-free-loan-toronto>).



✔ Networking is the name of the game!
To date, there are more than 35,000 Reichman University graduates from more than 90 countries. This gives students a unique opportunity to meet people from different backgrounds and learn about other nations and cultures, and to establish friendships that last a lifetime. It also creates a worldwide networking system that gives our students an advantage throughout their lives.

✔ Our small classes create an intimate atmosphere, which allows students to get to know each other and the staff. Our philosophy is that our students are our partners.

✔ Reichman University is one of the most prestigious universities in Israel. Employers seek Reichman University graduates because they come with practical tools and hit the ground running. Reichman University operates a Career Development Center that aims to prepare students and alumni for the job market, and to provide them with the tools to find suitable employment both before and after they graduate.

✔ Reichman University offers a large array of extracurricular activities: sports, debate club, Model UN, Israel advocacy, JLIC-RRIS Friday night dinners, shiurim, mincha club, choir, band, and much more.

WHY REICHMAN UNIVERSITY?

✔ The Raphael Recanati International School provides very special care for its students. We are the largest academic absorption center in the country. We are especially proud that we are home to more than 300 lone soldiers, who are currently studying here.

✔ One-third of Reichman University students are international, making us the most international university in Israel for full-degree students. Israeli students serve as counselors for first-year students in order to help them find their way around and get to know the system.

✔ Reichman University was ranked number one in student satisfaction for quality teaching for four consecutive years, in a nationwide survey conducted by Israel's Council for Higher Education. We are the first non-government-subsidized academic institution to grant doctoral degrees.



VISA & STATUS ASSISTANCE

Students are responsible for clarifying and establishing their status in Israel, and can turn to the Raphael Recanati International School staff for advice and assistance. Before commencing studies, all students must clarify their status and eligibility for a student visa (A-2), or Israeli citizenship, with the Israeli embassy or consulate in their country of origin. **A student visa should be obtained in advance, in the student's country of origin.** International students who are children of an Israeli parent must settle all matters, such as deferment of military service, with the nearest Israeli embassy or consulate.

The Jewish Agency provides advice and assistance to students considering immigrating to Israel.

See: www.jewishagency.org/JewishAgency/English/Aliyah/ and for North America/UK: www.nbn.org.il



CAREER CENTER

The Career Center strives to prepare students to enter the workplace and to help them find employment opportunities, by providing counseling, placement, and informational services. It is tailored to meet the specific needs of the students and graduates of each of Reichman University's schools, according to the relevant market. These services include personal career counseling and assistance, as well as lectures and workshops on job-seeking strategies, LinkedIn, and interviews. In addition, the Career Center creates recruitment and networking opportunities such as job fairs, Coffee Chats, and employers meetings. The center also maintains an updated listing of hundreds of job openings in Israel for students and graduates.

www.runi.ac.il/career/eng



HEALTH INSURANCE

All Reichman University students are required to have comprehensive health insurance coverage throughout the entire period of their studies. Israeli residents, including new immigrants, receive national health insurance for a low monthly fee, in accordance with the country's health insurance legislation. International students who are not covered by Israel's national health insurance (*bituach leumi*) should purchase their own health insurance policy to cover their medical needs while in Israel, or purchase the **UMS HAREL YEDIDIM** insurance policy for international students, offered by Reichman University.

Our special arrangement with HAREL YEDIDIM insurance company provides comprehensive health coverage for \$1,600 USD* per academic year, which will be charged at the beginning of each year.

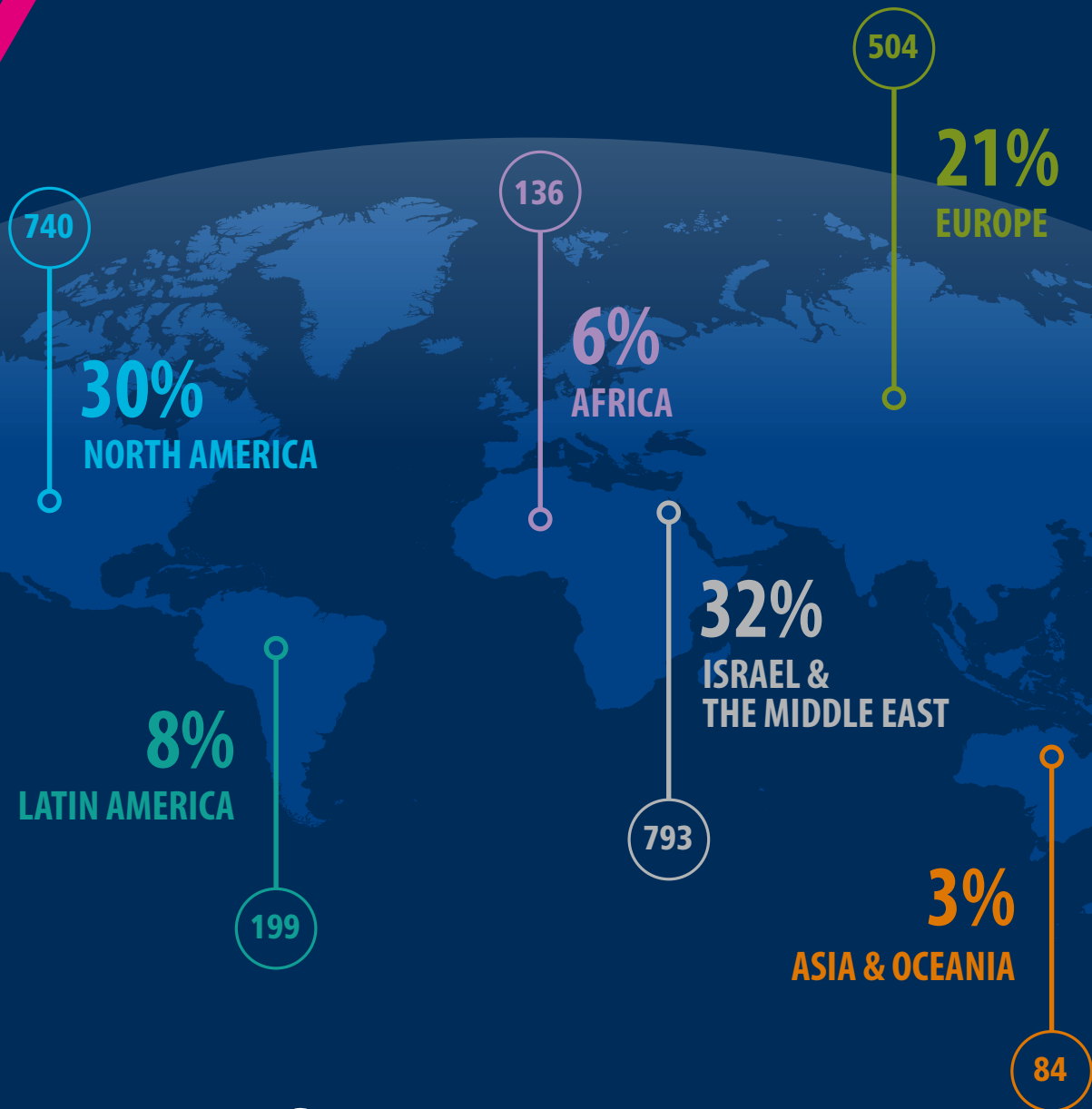
In order to have continuous coverage, the policy is automatically renewed from one academic year to the next, until the end of the program, unless the student notifies the school in writing that he/she wishes to cancel.

For more information: rris.insurance@runi.ac.il

**Rates are subject to change according to insurance company rate fluctuations.*



RRIS GLOBAL VILLAGE



30%



OF THE STUDENT POPULATION OF REICHMAN UNIVERSITY ARE INTERNATIONAL STUDENTS.
RRIS IS THE LARGEST ACADEMIC ABSORPTION CENTER IN ISRAEL.

ACADEMIC CALENDAR

ה'תשפ"ד 2023-2024

בית ספר אריסון למנהל עסקים
ARISON SCHOOL OF BUSINESS

Mini Semester 1	November 12, 2023 - December 22, 2023
Mini Semester 2	January 7, 2024 - February 16, 2024
Mini Semester 3	March 3, 2024 - April 12, 2024
Purim break	March 24, 2024
Passover break	April 22-29, 2024
Memorial Day and Independence Day	May 13-14, 2024
Shavuot break	June 12, 2024
Mini Semester 4	May 19, 2024 - June 28, 2024
Mini Semester 5	July 14, 2024 - August 23, 2024
Rosh Hashanah break	October 3-4, 2024
Yom Kippur break	October 12, 2024
Succoth break	October 17-24, 2024
Mini Semester 6	November 10, 2024

The schedule is tentative and subject to change.

Design Guy Tamir - www.2plustudio.com

Production Liron Tzour

Editor Naomi Lipstein

Photography Iya Volkova, Adi Cohen Zedek, Alon Gilboa,
Oren Shalev, Ran Yitzhak, Maya Gershon, Shira Gazit



ISRAEL

**The Raphael Recanati International School
Reichman University**

PO Box 167, Herzliya, Israel 46150

Attention: MA Registrar

Tel +972 9 960 2700

Fax +972 9 952 7334

rris.master@runi.ac.il



NORTH AMERICA

**The Raphael Recanati International School
c/o American Friends of Reichman University**

142 W. 57th Street 11th floor

New York, NY 10019

Tel + 1 212-213-5962

Fax +1 212-213-6436

rris.us@runi.ac.il

www.rris.runi.ac.il

Submit your application online

<https://forms.runi.ac.il/#/Public/Registration?lang=en&form=MA>