

ICHEC

BRUSSELS MANAGEMENT SCHOOL

TALENTS MAKER

GUIDE FOR
INTERNATIONAL STUDENTS



[ichec.be](https://www.ichec.be)



ICHEC

BRUSSELS MANAGEMENT SCHOOL

Guide for International Students 2022 - 2023

Important dates

| | First Semester | Second Semester | Retakes |
|--|------------------------|------------------------|-------------------------|
| Application Deadline | June 01, 2022 | November 15, 2022 | |
| Intensive week of French (3 ECTS – 30h/week) Optional | Sept 5 – 9, 2022 | Jan 30 – Feb 3, 2023 | |
| Classes | Sept 14 – Dec 23, 2022 | Feb 6 – May 16, 2023 | |
| Examination Session | Jan 9 – 28, 2023 | May 29 – June 17, 2023 | August 16 -Sept 2, 2023 |

Languages of instruction

Most of the courses during the semester are taught in French. However, we offer each semester a wide range of business and management courses in English.

No proof of language (TOEFL, IELTS, etc...) is required but we highly recommend a B2 (Common European Framework of reference) level in English/French depending on the language of the classes the student will follow.

An intensive week of French language classes is available the week before the start of each semester (see important dates).

Weekly French lessons at beginner, intermediate and advanced level are available during the whole academic year.



Required application documents

Students who have been nominated by their home university as exchange students will receive all information by email in order to start the application process.

In addition, they should send the following documents:

- ICHEC application form
- copy of passport or ID card
- color ID photo with a plain background
- copy of international medical insurance



Health care insurance

Students from an EEA country (EU, Iceland, Liechtenstein and Norway): European Health Insurance Card (EHIC).

Students from a country outside of the EEA: An "all-risk" insurance from the home country. Insurance must guarantee the coverage of costs and expenses of the emergency medical aid.

Housing

ICHEC will assist exchange students individually in finding an accommodation. Most exchange students stay in individual rooms with shared facilities in houses on the local private housing market. The international office of ICHEC advise all exchange students to arrive a few days before the start of the academic semester to arrange their housing.

Visa requirements

To enter Belgium, students from outside the European Union (except for Iceland, Liechtenstein, Monaco, Norway and Switzerland) do need a visa. Once ICHEC has received the application documents, the student will receive an acceptance letter to obtain a student visa (Schengen D).

More information: https://diplomatie.belgium.be/en/services/travel_to_belgium/studying_in_belgium

Information on COVID-19

ICHEC started again in September 2021 in 100% face-to-face modus. All activities are allowed on campus.

Quarantine arrangements and relevant information about COVID-19 are constantly being updated by the government, you are advised to check the government websites for the latest details:

- <https://www.info-coronavirus.be/en/>
- <https://diplomatie.belgium.be/en>
- https://diplomatie.belgium.be/en/services/travel_to_belgium/studying_in_belgium

Estimated cost of living

| | Euro per month | Euro per year |
|---------------------------|----------------|---------------|
| Accommodation | 400 – 500 | |
| Food | 300 | |
| Teaching material | 20 | |
| Transport ticket Brussels | | 50 |

Courses offered to exchange students

Almost all courses are open to exchange students

More information and list of courses: <https://www.ichec.be/en/incoming-students>

Student life at ICHEC

Erasmus Student Network

ESN ICHEC is a part of Erasmus Student Network, which is the biggest student organization in Europe. They help exchange students to integrate in Belgium, introduces them to the culture and organizes various events and trips. https://www.instagram.com/esn_ichec_brussels/?hl=fr

Buddy Programme

All exchange students are offered buddies – local students who help to facilitate and integrate international students into ICHEC community and local life.

Free Mover Students

Free Mover students are students outside of the regular bilateral agreement between ICHEC and the partner university. The application process for Free Mover students is very similar to the one of the exchange students.

Only differences:

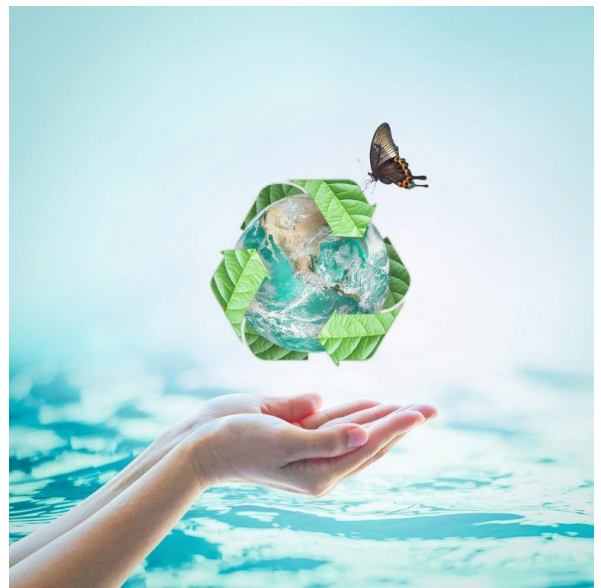
- They don't have to be nominated by their home university.
- Specific application form for Free Mover students
- Tuition fee of 600 EUR per semester for students coming from partner universities, and 800 EUR per semester for students coming from non-partner universities.

ICHEC Summer Program

2 week long course in "Regenerative Economy" held during the last week of June and first week of July.

- Circular, collaborative, local, bioinspired and functional economy with focus on
- 21st century skills, collaboration, communication, critical thinking and creativity
- ECTS transferrable credits

More information: <https://www.ichec.be/en/summer-school>



Incoming Coordinator **Mrs. Kristien MINET**

Tel.: +32 2 778 03 75

Email: exchange.in@ichec.be

www.ichec.be

www.facebook.com/ICHEC.Student.Exchange