



Raphael Recanati
International School

LIVE IN ISRAEL, STUDY IN ENGLISH

ARISON SCHOOL OF BUSINESS



ONE-YEAR MBA PROGRAM

2024-2025

CONTENTS

PROGRAM 4

CURRICULUM 5

REICHMAN UNIVERSITY FACTS 6

APPLICATION, ADMISSION, TUITION 8

FINANCIAL AID 9


WHY REICHMAN UNIVERSITY? 10

HEALTH INSURANCE, VISA STATUS, CAREER CENTER 11

RRIS GLOBAL VILLAGE 12

CAMPUS LIFE 13

ACADEMIC CALENDAR 15

 Reichman University was founded with the aim of nurturing future leaders. In 30 years, we have created a pioneering and innovative academic center. Our students are imbued with a commitment to excellence and original thinking. 'The university of the future,' as we see it, has to prepare its students for a constantly changing world by being able to innovate skillfully, to dare, and to initiate. We believe that the knowledge and tools acquired at Reichman University support personal and professional goal fulfillment and enable our graduates to tackle the challenges of our global reality."



Prof. Uriel Reichman
Founding President and Chairperson of the Board of Directors, Reichman University

PROGRAM

The Arison School of Business is offering a One-Year MBA program focusing on the management of fast-growth, competitive companies. The program combines courses in innovation and entrepreneurship with relevant practical experience. Students have opportunities to participate in internships at startup firms and well-known organizations. Alternatively, students can start their own venture under the guidance of Reichman University faculty and professionals from the industry.

Courses are taught by top Reichman University lecturers, and leading academics and practitioners in their fields. The program's goal is to provide students with managerial tools that will enable their integration into the business world in growing companies, and offer them opportunities to develop and promote their professional careers.

This MBA is suitable for students who possess a strong academic background and are interested in investing in a particularly intensive degree for a short period of time. The program is designed as a full-time MBA degree, and thus having a part-time job concurrently is not recommended.



CURRICULUM

The curriculum offers core courses in finance, accounting, marketing, strategy, and management - with an emphasis on innovation and entrepreneurship, as well as on the unique challenges of fast-growing companies. As an integral part of the curriculum, students will learn from existing startups and other companies, and from guest lecturers who are experts in their fields.

Sample courses

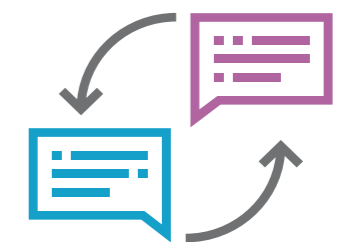
- Business Analysis & Valuation
- Business Communications
- Competitive Strategy for SMEs
- Data Analysis for Business Applications
- Data Science Intuition
- Digital Marketing
- Financial Statement Analysis and Valuation
- Human Resources for New Ventures
- Marketing Management
- Planning & Financing New Ventures
- Quantitative Methods
- Systematic Creativity
- UX Research for Product Innovation

In the final months of the program, students will choose one of the following options for their practicum:

- **Internship**
Intensive experience in an existing business (Real World Experience - Practicum)
- **Mentorship**
Supervised management of a new venture (Product - Practicum)

Students are required to complete **42** credits to be eligible for the degree - **36 core credits + six practicum credits.**

** Reichman University reserves the right to cancel, alter, or expand the academic programs offered.*



REICHMAN UNIVERSITY

FAST FACTS

REICHMAN UNIVERSITY: THE MOST INTERNATIONAL UNIVERSITY IN ISRAEL




 Israel's first and only **private university**

Over **38**  **research institutes** at Reichman University
www.runi.ac.il/research-institutes



Over **38,000** **graduates worldwide**

The Career Center aims to assist alumni in integrating into the professional market, as employers seeking to recruit suitable candidates 


Reichman University created new, academic **interdisciplinary concepts**  in the fields of entrepreneurship, counter-terrorism and sustainability - models that are being implemented around the world

Over **400** lone soldiers studying for full degrees

 The Israeli Council for Higher Education granted Reichman University permission to confer **doctoral degrees**


Over **2,500** Raphael Recanati International School students from over **90** countries make up 1/3 of the Reichman University student body

Reichman University's Alumni Association, with over 38,000 graduates, forms a professional and social alumni community that promotes **networking**  from different countries, and strengthens the pride and sense of belonging to Reichman University and its alumni

 Ranked **no. 1** in Israel for our treatment of **IDF reservists**

APPLICATION, ADMISSION, TUITION

APPLICATION PERIOD

The application period for the 2024-2025 academic year is **November 15, 2023 - August 31, 2024**.

Due to the competitive nature of the admissions process, we recommend that applicants prepare their applications well in advance of the deadlines. Reichman University reserves the right to impose stricter criteria upon applicants during the late application period or upon applicants who submit material late. Preference will be given to applicants who submit all required material during the regular application period.

ADMISSION CRITERIA

- Completed undergraduate degree from a recognized academic institution
- BA degree with a GPA of at least 3.3 or 85 (students who don't meet this requirement can be accepted based on a GMAT quantitative score)
- High quantitative abilities
- Students who do not have a background in quantitative fields will be required to take preparatory courses (Mathematics, Microeconomics, Statistics) as prerequisites.

Failure to complete and pass the preparatory courses revokes a student's conditional acceptance to the program.

ONLINE APPLICATION

Complete the online application form at <https://forms.runi.ac.il/#/Public/Registration?lang=en&form=MA>

Please note your application must include:

- Official transcripts of previous academic undergraduate and graduate studies. Transcripts must bear the official stamp of the issuing institution. If you do not send the original transcript, scanned photocopies of the original documents will be accepted if properly notarized.*
- Copy of passport or identity card
- Curriculum Vitae (CV)/Resume in English
- Two references with valid contact details, completed as requested in the online registration form
- A short biography / Bio Form
- Essay

Candidates may be interviewed.

** An official, notarized English translation must be submitted for all transcripts not originally issued in English.*

TUITION & FEES

- The application fee is **\$100 USD** (non-refundable)
- The down payment is **\$2,000 USD**. Applicants must pay the fee to secure their place in the program after being accepted. Once the down payment has been received, the applicant's place is secured and confirmed.
- The tuition for the One-Year MBA program is **\$28,500 USD**.

If payment is in Israeli shekels, the value in shekels will be determined according to the exchange rate on the day that payment is received.

Reichman University reserves the right to change all tuition and fee rates without prior notice.

APPLY ONLINE AT

<https://forms.runi.ac.il/#/Public/Registration?lang=en&form=MA>

FINANCIAL AID

FREE APPLICATION FOR FEDERAL STUDENT LOANS (FAFSA)

US citizens are eligible to apply to borrow FAFSA Stafford loans as part of the Direct Loans Programs and/or Sallie Mae. For students enrolled in the 2024-2025 academic year, the deadline to apply for loans is **April 1st, 2025**. Our school code is G40703, and the school name is Raphael Recanati International School. For further information and to start the process, please contact Rina Haller in our US office at Rina@aforu.org.

GRANT FOR NEW IMMIGRANTS

The Government of Israel offers financial assistance for graduate school tuition to new immigrants under the age of 30, provided the immigrant does not already have a graduate degree from abroad and the program is recognized by the Student Authority. Students must begin their graduate studies within three years of their Aliyah date (not including army service), in order to be eligible for this assistance.

https://www.gov.il/en/Departments/Units/students_authority_maya

FOR MORE INFORMATION:

<https://www.runi.ac.il/en/schools/rris/admissions/graduate/financial-aid-and-scholarships/>

MASA

Jewish tourists between the ages of 18-30 who have not been in Israel on a prior long-term program are eligible for grants and scholarships through the Masa Project.

Please note: once you make Aliyah you are not eligible for this grant so please check this before making Aliyah!

More information at: www.masaisrael.org



SAP (Students Assistance Programs)

Canadian students interested in loans and grants from the Canadian government can get information at <https://www.canada.ca/en/services/benefits/education/student-aid/grants-loans/province-apply.html>

Financial aid is also available through the Jewish Free Loan Association for the Greater Toronto area (<https://jewishtoronto.com/directory/jewish-free-loan-toronto>)



✓ Networking is the name of the game!
To date, there are more than 38,000 Reichman University graduates from over 90 countries. This gives students a unique opportunity to meet people from different backgrounds and learn about other nations and cultures, and to establish friendships that last a lifetime. This also creates a global network that provides our graduates with an advantage throughout their professional career.

✓ Our small classes create a more intimate learning setting, which allows students to get to know each other and the staff. Our philosophy is that our students are our partners.

✓ Reichman University is one of the most prestigious universities in Israel. Employers seek Reichman University graduates because they come with practical tools and hit the ground running. Reichman University operates a Career Development Center that aims to prepare students and alumni for the job market, and to provide them with the tools to find suitable employment both before and after they graduate.

✓ Reichman University offers a wide range of extracurricular activities: sports, debate club, Model UN, Israel advocacy, JLIC-RRIS Friday night dinners, shiurim, mincha club, choir, band, and much more.

✓ The Raphael Recanati International School provides very special care for its students. We are the largest academic absorption center in the country. We are especially proud that we are home to more than 400 lone soldiers, who are currently studying here.

✓ 1/3 of Reichman University students are international, making us the most international university in Israel for full-degree students. Israeli students serve as counselors for first-year students in order to help them find their way around and get to know the system.

✓ Reichman University was ranked number one in student satisfaction for quality teaching for four consecutive years, in a nationwide survey conducted by Israel's Council for Higher Education. We are the first non-government-subsidized academic institution to grant doctoral degrees.

WHY REICHMAN UNIVERSITY ?

VISA & STATUS ASSISTANCE



Students are responsible for clarifying and establishing their status in Israel, and can turn to the Raphael Recanati International School staff for advice and assistance. All students must clarify their status and eligibility for a student visa (A-2), or Israeli citizenship, in advance before arriving to Israel, with the Israeli embassy or consulate in their country of origin. International students who are children of an Israeli parent must settle all matters, such as deferment of military service, with the nearest Israeli embassy or consulate. For students considering immigration to Israel. The Jewish Agency provides advice and assistance: www.jewishagency.org/Aliyah/, or for students from North America/UK: www.nbn.org.il

CAREER CENTER



The Career Center strives to prepare students to enter the workplace and help them find employment opportunities by providing counseling, placement, and informational services. It is tailored to meet the specific needs of the students and graduates of each of Reichman University's schools, according to the relevant market. These services include personal career counseling and assistance, including one-on-one LinkedIn sessions, as well as lectures and workshops on job-seeking strategies, LinkedIn, and interviews. In addition, the Career Center creates recruitment and networking opportunities such as job fairs and employer meetings. The center also maintains an updated listing of hundreds of job openings in Israel for students and graduates.

www.runi.ac.il/career/eng

HEALTH INSURANCE



All Reichman University students are required to have comprehensive health insurance coverage throughout the duration of their studies. Reichman University cannot cover medical costs or take responsibility for students who do not have insurance. You may purchase your own health insurance policy to cover your medical needs while in Israel, or purchase the UMS HAREL YEDIDIM insurance policy for international students, offered by Reichman University (RUNI). If you are an Israeli resident covered by Israel's National Health Insurance (Bituach Leumi), you do not need any additional health insurance. The insurance plan with HAREL YEDIDIM provides comprehensive health coverage for *\$1,600 USD per academic year, which will be charged at the beginning of the year. In order for students to have continuous coverage, the HAREL YEDIDIM policy will be automatically renewed from one academic year to the next, until the end of the program, unless the student notifies the school in writing that they have an alternative health insurance and wishes to cancel.

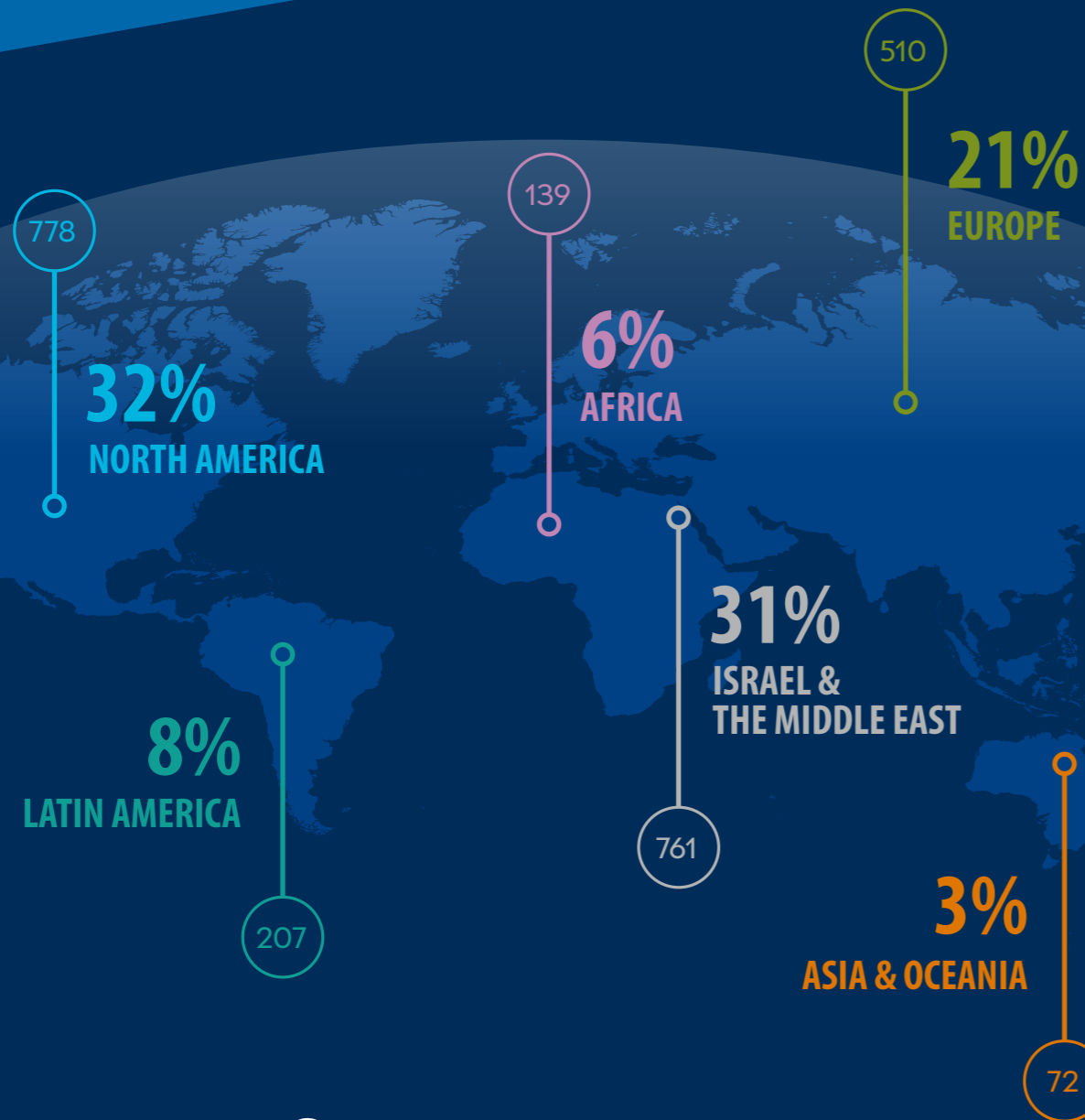
Please note that the HAREL YEDIDIM health insurance plan does not cover pre-existing conditions.

For more information: rriis.insurance@runi.ac.il

* Rates are subject to change according to insurance company rate fluctuations.



RRIS GLOBAL VILLAGE



30%



OF THE STUDENT POPULATION OF REICHMAN UNIVERSITY ARE INTERNATIONAL STUDENTS.
RRIS IS THE LARGEST ACADEMIC ABSORPTION CENTER IN ISRAEL.

CAMPUS LIFE AT REICHMAN UNIVERSITY



Discover Israel – Rafting on the North Trip



Tazuz Sports and Social Activities



Masa Ceremony in Latrun for Yom Hazikaron



Bike and Wine Trip



International Festival



Yom Ha'Atzmaut



Hanukkah candle lighting



Gabriella Hertzberger
Project Manager, Tenengroup
Netherlands



Deciding to get my One-Year MBA degree in Israel was a bold choice, but choosing to do it at Reichman University felt like the right one. The staff, professors, and fellow students made my transition and studying pleasant, challenging, and worthwhile. The gorgeous campus became my second home. I would definitely recommend the One-Year MBA program to anyone who is interested."



ACADEMIC CALENDAR ה'תשפ"ה 2024-2025

- Students who are required to take online prep courses in Mathematics and Statistics must do so prior to the start of the academic year. Tutorial sessions will be offered on campus during October (prior to exams).
- Exams in these subjects will be held on campus. Students must pass the exams in order to begin the program.
- The online prep course in Economics will be given via Coursera.

Mini Semester 1	November 10 - December 20, 2024
Mini Semester 2	January 5 - February 14, 2025
Mini Semester 3	March 2 - April 11, 2025
Purim break	March 14, 2025
Passover break	April 13-18, 2025
Memorial Day and Independence Day	April 30 - May 1, 2025
Shavuot break	June 2, 2025
Mini Semester 4	May 4 - June 13, 2025
Mini Semester 5	June 29 - August 8, 2025
Rosh Hashanah	September 22-24, 2025
Yom Kippur	October 1-2, 2025
Succoth	October 6-14, 2025

*The schedule is tentative and subject to change.
Exams will be held at the end of each semester.*

Design Guy Tamir - guy@2plustudio.com

Production Adaya Hoffman

Editor Naama Oren

Photography Ilya Volkova, Adi Cohen Zedek, Alon Gilboa, Oren Shalev, Ran Yitzhak, Maya Gershon

ISRAEL

The Raphael Recanati
International School
Reichman University


PO Box 167, Herzliya, Israel 461010
Attention: MA Registrar
Tel +972 9 960 2700
Fax +972 9 952 7334
rris.registrar@runi.ac.il

NORTH AMERICA

Reichman University
c/o American Friends of Reichman
University

142 W. 57th Street 11th floor
New York, NY 10019
Tel + 1 212-213-5962, + 1 212-213-5961
rris.us@runi.ac.il

www.rris.runi.ac.il



אריסון למנהל עסקים
ARISON SCHOOL
מפגש לאודור לממשל
LAUDER SCHOOL