

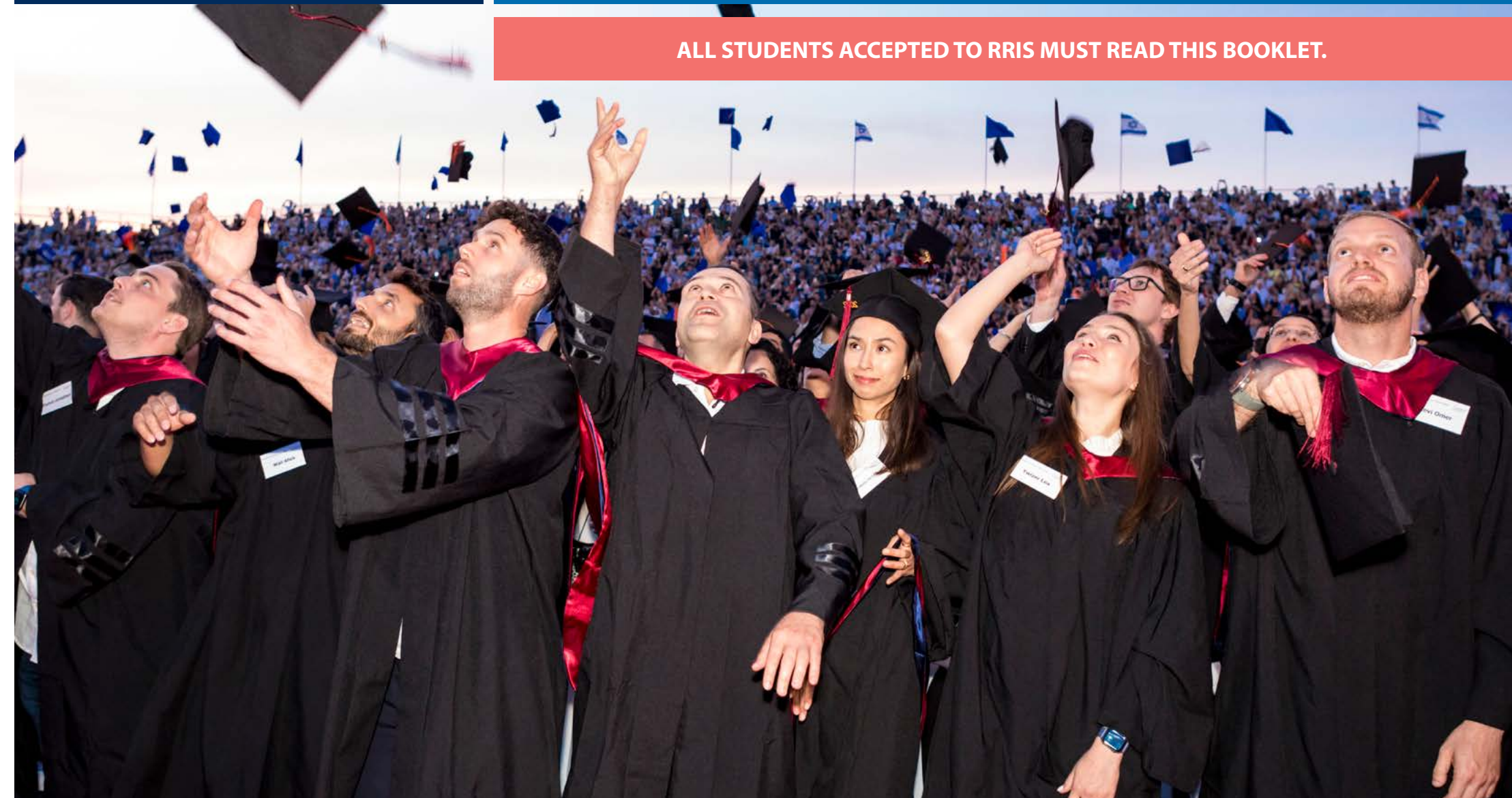


**RAPHAEL RECANATI INTERNATIONAL SCHOOL
at REICHMAN UNIVERSITY**

GRADUATE STUDENT INFORMATION BOOKLET

2024-2025 Academic Year

ALL STUDENTS ACCEPTED TO RRIS MUST READ THIS BOOKLET.



CONGRATULATIONS ON YOUR ACCEPTANCE TO THE RAPHAEL RECANATI INTERNATIONAL SCHOOL IN REICHMAN UNIVERSITY!

[Home Page](#)

[Welcome](#)

[Orientation Week](#)

[Ulpan](#)

[Reichman University
Dormitories](#)

[Health Insurance](#)

[Visa Information](#)

[Living in Israel](#)

[Tuition Fees and
Terms of Payment](#)

[Scholarships and Financial Aid](#)

[Study Skills Center &
Psychological counseling](#)

[Contact Info](#)

[Academic Calendar](#)

- MA Government | MA in HCI
MSc Machine Learning
- MA in Financial Economics
- Global MBA
- One year MBA
- MBA Healthcare Innovation
- MA in Behavioral Economics

[Final Checklist](#)

- ➔ You are about to embark on one of the most significant experiences of your life. Reichman University (RUNI) is a dynamic learning community that fosters creativity and innovation and promotes the development of new opportunities inside and outside the classroom.
- ➔ This booklet contains essential information regarding your studies at the RRIS and will assist you in making decisions prior to your arrival.
- ➔ We are here to help make your student experience the best that it can be.



[Home Page](#)

[Welcome](#)

[Orientation Week](#)

[Ulpan](#)

[Reichman University
Dormitories](#)

[Health Insurance](#)

[Visa Information](#)

[Living in Israel](#)

[Tuition Fees and
Terms of Payment](#)

[Scholarships and Financial Aid](#)

[Study Skills Center &
Psychological counseling](#)

[Contact Info](#)

[Academic Calendar](#)

- MA Government | MA in HCI
- MSc Machine Learning
- MA in Financial Economics
- Global MBA
- One year MBA
- MBA Healthcare Innovation
- MA in Behavioral Economics

[Final Checklist](#)

WHAT'S NEXT?

1

Read the information in this booklet carefully as it provides answers to your questions.

2

Accept your admissions offer within 14 days.

3

Update your personal details in the [Candidate Information Station](#).

4

Confirm your acceptance by logging in to your [Candidate Info Station](#) and paying the enrollment deposit (which will be credited towards your annual tuition payment).



WELCOME FROM THE HEAD OF THE SCHOOL

[Home Page](#)

[Welcome](#)

[Orientation Week](#)

[Ulpan](#)

[Reichman University
Dormitories](#)

[Health Insurance](#)

[Visa Information](#)

[Living in Israel](#)

[Tuition Fees and
Terms of Payment](#)

[Scholarships and Financial Aid](#)

[Study Skills Center &
Psychological counseling](#)

[Contact Info](#)

[Academic Calendar](#)

- MA Government | MA in HCI
MSc Machine Learning
- MA in Financial Economics
- Global MBA
- One year MBA
- MBA Healthcare Innovation
- MA in Behavioral Economics

[Final Checklist](#)

Please allow me to welcome you to our lovely campus and university. It is my hope that each of you excel in your academic studies during your time with us. We are here to provide you with the best tools we can offer so that in just a few years, we can meet you at graduation in your caps and gowns, on your way to achieving your professional goals. This year we are blessed with an impressive intake of undergraduate and graduate students.

One of our most important aims, in addition to providing you with a stimulating academic environment, is to offer you an opportunity for acculturation and integration at Reichman University and in the State of Israel. Please indulge in as many extra-curricular activities as possible during your time here. Among these are the Debate Club, Entrepreneurship Club, the Model UN, JLIC, RRIS hiking, biking, overnight field trips, AEPi, RUNI Radio, the Ambassadors' Club, the dance troupe, band or choir, festival celebrations, RUNI Talent, and so much more. Hopefully, the careful balance between your academic studies and extra-curricular activities will provide you with an enriching and well-rounded education, as well as dozens of friends for life and networks that will serve you even decades from now, when you have become veterans of your places of work and have raised beautiful families.

The dedicated staff of the Raphael Recanati International School is here to help solve any problems you may encounter, both on and off campus, to the best of our ability. Please do not hesitate to call us and let us know what's on your mind. Consider us your family here in Israel. I look forward to meeting each and every one of you - please do not hesitate to approach me!

Wishing all of you the best possible time at Reichman University.

Jonathan Davis

Vice President for External Relations

Head, Raphael Recanati International School



[Home Page](#)

[Welcome](#)

[Orientation Week](#)

[Ulpan](#)

[Reichman University
Dormitories](#)

[Health Insurance](#)

[Visa Information](#)

[Living in Israel](#)

[Tuition Fees and
Terms of Payment](#)

[Scholarships and Financial Aid](#)

[Study Skills Center &
Psychological counseling](#)

[Contact Info](#)

[Academic Calendar](#)

- MA Government | MA in HCI
MSc Machine Learning
- MA in Financial Economics
- Global MBA
- One year MBA
- MBA Healthcare Innovation
- MA in Behavioral Economics

[Final Checklist](#)

WELCOME FROM THE RRIS DIRECTOR

Shalom and welcome to RRIS!

On behalf of Reichman University Raphael Recanati International School, it is my privilege to welcome you among our ranks. With international students hailing from over 90 countries around the world, the RRIS prides itself on embracing the various cultures that have come together in Reichman University's "melting pot" spirit.

Reichman University is a leading academic institution that aims to be a center of global excellence. We are unique in our educational methods, which are based on an interdisciplinary approach. We combine theory with real world experience and provide our students with cultural and professional proficiencies.

At the RRIS we educate talented young people to influence and contribute in every arena in which they choose to integrate, in Israel and worldwide. Our basic outlook, which is rooted in the twin concepts of individual freedom and responsibility, emphasizes student entrepreneurship and leadership alongside commitment to community service.

Our staff is devoted to making you feel at home, be attentive and respond to your every need. We wish you abundant success on your way to fulfill your academic goals.

All the best,

Carine Katz

Director

Raphael Recanati International School



ORIENTATION WEEK

[Home Page](#)

[Welcome](#)

[Orientation Week](#)

[Ulpan](#)

[Reichman University
Dormitories](#)

[Health Insurance](#)

[Visa Information](#)

[Living in Israel](#)

[Tuition Fees and
Terms of Payment](#)

[Scholarships and Financial Aid](#)

[Study Skills Center &
Psychological counseling](#)

[Contact Info](#)

[Academic Calendar](#)

- MA Government | MA in HCI
MSc Machine Learning
- MA in Financial Economics
- Global MBA
- One year MBA
- MBA Healthcare Innovation
- MA in Behavioral Economics

[Final Checklist](#)

MA programs in Government, HCI, and MSc. in Machine Learning.

The academic year will begin with Orientation Week on **October 27, 2024.**

One of the innovative and important services that Reichman University (RUNI) provides to its students is a week-long orientation for first-year students. Orientation Week is designed to make first year students' entry into the academic environment as smooth as possible. Orientation Week is vital preparation for succeeding at R and participation is mandatory.

You will spend Orientation Week meeting future classmates, faculty and staff while participating in discussions and lectures about the structure of the MA program, campus services and facilities. The Week is organized and run by the MA program administration and faculty, guest lecturers and current students who serve as peer counselors. They will help guide you through the use of the library, computer laboratories and databases.

Orientation for MA Financial Economics, GMBA, One-Year MBA and MBA Healthcare Innovation will be held on November 8, 2024.

Orientation for MA Behavioral Economics will be held November 7, 2024.

The academic year will begin on November 10, 2024.

Orientation Week will include

Academic Orientation Meet the dean of your school; consult with your academic advisor regarding class assignment and selection; and, participate in introductory lectures and conversations.

Technical Orientation Receive your student ID card; learn how to access your email; use the online student portal (essential for class registration, email, grade access and other key functions).

Social Orientation Sign up for RUNI extracurricular activities (clubs, sports, societies, etc.); engage with the local community via volunteering opportunities; meet and bond with your peers as we engage in structured discussions, and travel to the desert for an excursion including hikes, team building and lots of fun.

[Orientation Trip Movie >>](#)



ULPAN (ELECTIVE HEBREW COURSE)

[Home Page](#)

[Welcome](#)

[Orientation Week](#)

[Ulpan](#)

[Reichman University
Dormitories](#)

[Health Insurance](#)

[Visa Information](#)

[Living in Israel](#)

[Tuition Fees and
Terms of Payment](#)

[Scholarships and Financial Aid](#)

[Study Skills Center &
Psychological counseling](#)

[Contact Info](#)

[Academic Calendar](#)

- MA Government | MA in HCI
MSc Machine Learning
- MA in Financial Economics
- Global MBA
- One year MBA
- MBA Healthcare Innovation
- MA in Behavioral Economics

[Final Checklist](#)

Learning Hebrew is essential for your adjustment in Israel. RUNI offers an *ulpan* (Hebrew language studies) during the academic year at four different levels so you may improve your proficiency. Please note that graduate students do not earn academic credits for the *ulpan*.

To join the *ulpan* you will need to take a Hebrew placement test after which you will be divided into classes based on your test results. Classes are designed to help students feel comfortable using Hebrew.

The placement test for the *ulpan* will be held during Orientation Week.

Online registration for the course will take place during the first two weeks of the academic year.

Please note that your participation in the *ulpan* is subject to: it not conflicting with any mandatory classes; and, the number of places left available in the *ulpan*.

INTENSIVE ACADEMIC SUMMER HEBREW ULPAN

RUNI is home to an annual five-week intensive summer *ulpan* course in July and August. This is an academic *ulpan* and participants who attend the entire course will be awarded a certificate of completion from the Ministry of Education. * There is an additional fee for participating in the summer *ulpan*.

* *Students at the summer ulpan do not earn academic credits from RUNI.*

For more details regarding the summer *ulpan* please contact ulpanrris@runi.ac.il

REICHMAN UNIVERSITY DORMITORIES

[Home Page](#)

[Welcome](#)

[Orientation Week](#)

[Ulpan](#)

[Reichman University
Dormitories](#)

[Health Insurance](#)

[Visa Information](#)

[Living in Israel](#)

[Tuition Fees and
Terms of Payment](#)

[Scholarships and Financial Aid](#)

[Study Skills Center &
Psychological counseling](#)

[Contact Info](#)

[Academic Calendar](#)

- MA Government | MA in HCI
MSc Machine Learning
- MA in Financial Economics
- Global MBA
- One year MBA
- MBA Healthcare Innovation
- MA in Behavioral Economics

[Final Checklist](#)

To experience university life in the best way, nothing equals living on campus where students can enjoy convenience and a sense of community. In the 2024- 2025 academic year RUNI students will have the option of enjoying the high standard of living offered in the 748 fully equipped residential units located in three 12-story towers on RUNI'S campus.

The dormitory towers were planned and designed to meet green building standards where students have many opportunities for interaction which contributes to their academic success and personal growth. The facilities include fully equipped study halls to enable students to focus on their studies and to maintain a diverse social life. Each building also has laundry rooms with washing machines and dryers at the residents' disposal, in addition to a Shabbat elevator and a synagogue in the Recanati building.

The apartments are available to all students pursuing undergraduate and master's degrees at RUNI. The dorms include apartments for single students, married couples (both RUNI students), and accessible units for students with disabilities. The rent includes Wi-Fi, TV services (cable), building fees, maintenance, gardening, cleaning of common areas, and 24/7 security services on the premises; It does not include electricity and water fees.



REICHMAN UNIVERSITY DORMITORIES

[Home Page](#)

[Welcome](#)

[Orientation Week](#)

[Ulpan](#)

[Reichman University Dormitories](#)

[Health Insurance](#)

[Visa Information](#)

[Living in Israel](#)

[Tuition Fees and Terms of Payment](#)

[Scholarships and Financial Aid](#)

[Study Skills Center & Psychological counseling](#)

[Contact Info](#)

[Academic Calendar](#)

- MA Government | MA in HCI
- MSc Machine Learning
- MA in Financial Economics
- Global MBA
- One year MBA
- MBA Healthcare Innovation
- MA in Behavioral Economics

[Final Checklist](#)

All apartments, except for the units for married couples, are designated for one student per unit. The apartments are furnished to accommodate all residents' needs: Every apartment has an air conditioning unit, a private bathroom with shower, a bed (120cm/190cm for which linen is not included), and a kitchen area. The kitchen is fully equipped with a refrigerator, electric cooking top, microwave, and an electric kettle. In addition, the apartment includes a desk, closet, TV, a dining table and chairs.

The rental fee for a single unit is \$950 USD per month.

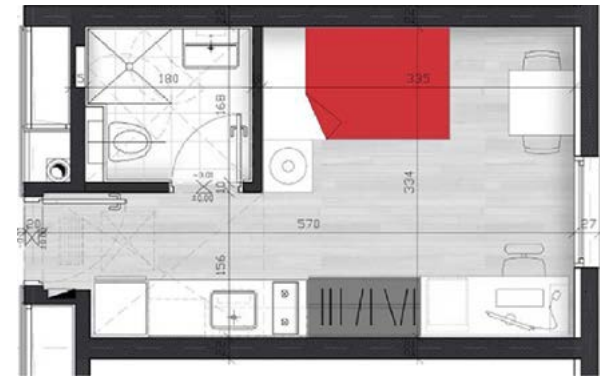
The contract period for students who wish to reside in an RUNI dormitory suite begins on the day the student move into the suite and ends on September 30th, 2025.

For information, please see the RUNI Dormitories website and contact the Dorms Coordinator at

dorms@runi.ac.il

[RUNI DORMITORIES clip >>](#)

Single Units



The single units are approximately 20 square meters.

**The image is for illustrative purposes only.*

HEALTH INSURANCE

[Home Page](#)

[Welcome](#)

[Orientation Week](#)

[Ulpan](#)

[Reichman University Dormitories](#)

[Health Insurance](#)

[Visa Information](#)

[Living in Israel](#)

[Tuition Fees and Terms of Payment](#)

[Scholarships and Financial Aid](#)

[Study Skills Center & Psychological counseling](#)

[Contact Info](#)

[Academic Calendar](#)

- MA Government | MA in HCI
MSc Machine Learning
- MA in Financial Economics
- Global MBA
- One year MBA
- MBA Healthcare Innovation
- MA in Behavioral Economics

[Final Checklist](#)

All Reichman University students are required to have comprehensive health insurance coverage throughout the duration of their studies. Reichman University cannot cover medical costs or take responsibility for students who do not have insurance.

You may purchase your own health insurance policy to cover your medical needs while in Israel, or purchase the UMS HAREL YEDIDIM insurance policy for international students offered by Reichman University. If you are an Israeli resident covered by Israel's National Health Insurance (*bituach leumi*) you do not need any additional health insurance. The insurance plan with HAREL YEDIDIM provides comprehensive health coverage for **\$1600 USD*** per academic year which will be charged at the beginning of the year. Please see the next page for policy details.

For all first year students the insurance policy will start on October 20, 2024.

- for MA Diplomacy, MA Counter-Terrorism, MBA Healthcare, MA HCI, and One-Year MBA students the insurance policy will end on September 30, 2025.
- for MA Government Thesis track, MSc Machine Learning, GMBA and MA Behavioral Economics students the insurance policy will end on August 31, 2025, and then will be automatically renewed for another year unless the student notifies the school in writing that he/she has an alternative health insurance and wishes to cancel.

- for MAFE students the insurance policy will end on August 31, 2025, and then will be automatically renewed for another semester unless the student notifies the school in writing that he/she has an alternative health insurance and wishes to cancel.

Please note that the HAREL YEDIDIM health insurance plan does not cover pre-existing conditions.



HEALTH INSURANCE

[Home Page](#)

[Welcome](#)

[Orientation Week](#)

[Ulpan](#)

[Reichman University
Dormitories](#)

[Health Insurance](#)

[Visa Information](#)

[Living in Israel](#)

[Tuition Fees and
Terms of Payment](#)

[Scholarships and Financial Aid](#)

[Study Skills Center &
Psychological counseling](#)

[Contact Info](#)

[Academic Calendar](#)

- MA Government | MA in HCI
MSc Machine Learning
- MA in Financial Economics
- Global MBA
- One year MBA
- MBA Healthcare Innovation
- MA in Behavioral Economics

[Final Checklist](#)

In order for students to have continuous coverage, the HAREL YEDIDIM policy will be automatically renewed from one academic year to the next, until the end of the program, unless the student notifies the school in writing that he/she has an alternative health insurance and wishes to cancel.

Please note that the HAREL YEDIDIM health insurance plan does not cover pre-existing conditions.

IN ORDER TO REGISTER FOR HEALTH INSURANCE THROUGH RUNI YOU MUST:

- 1. Log in to your [Candidate Information Station](#) and check YES for insurance on the Status & Insurance section.**
- 2. Fill out the health declaration, which will be sent to you six weeks before the beginning of the insurance, as required by "Harel Yedidim". Without this declaration the policy cannot be issued.**

Medication

If you are taking prescribed medication it is advised to bring an adequate supply for at least the first few months until you can set up care in Israel. If that is not possible, you should bring a doctor's prescription (clearly typed in English) for the medicine that you are using, or a prescription of a generic medication that is suitable for your condition. It will have to be translated by an Israeli doctor in order to purchase it in a pharmacy in Israel.

National Health Insurance (Bituach Leumi) for Israeli residents

All Israeli residents who are registered for National Health Insurance (*Bituach Leumi*) including new immigrants (*olim chadashim*) are entitled to receive National Health Insurance for a low monthly fee. New immigrants who are not employed are entitled to twelve months of free national health insurance.

***The HAREL YEDIDIM yearly rate of \$1600 USD is subject to change from year to year according to insurance company rate fluctuations. A notice about any rate change will be updated in the website in advance.**

For questions regarding health insurance email rrii.insurance@runi.ac.il.

HEALTH INSURANCE FOR REICHMAN UNIVERSITY STUDENTS

[Home Page](#)

[Welcome](#)

[Orientation Week](#)

[Ulpan](#)

[Reichman University Dormitories](#)

[Health Insurance](#)

[Visa Information](#)

[Living in Israel](#)

[Tuition Fees and Terms of Payment](#)

[Scholarships and Financial Aid](#)

[Study Skills Center & Psychological counseling](#)

[Contact Info](#)

[Academic Calendar](#)

- MA Government | MA in HCI
- MSc Machine Learning
- MA in Financial Economics
- Global MBA
- One year MBA
- MBA Healthcare Innovation
- MA in Behavioral Economics

[Final Checklist](#)

HAREL Insurance & Finance Ltd., Israel's leading firm in health insurance, and YEDIDIM, which serve thousands of students in Israel, have joined together to create an overall insurance protection program providing for your health care needs. The medical services are provided by the **Clalit Healthcare** providers throughout Israel. Clalit and Harel operate a Call Center in English and in Hebrew 24/7. The medical coverage is based on the UMS - University Medical Services Policy. All costs are quoted in US dollars.

OUTLINE OF THE UMS POLICY

Coverage Item

- Overall coverage for insurance period
- Maximum period of hospitalization
- Visit to doctor & specialist
- Visit to doctor who does not have an arrangement with the Clalit
- Laboratory tests, x-rays, etc. with no ceiling
- Medicine in the health service basket at the Clalit pharmacies, according to doctor's prescription
- Emergency dental treatment
- Assistance for flight to country of origin due to medical problem, subject to approval of Harel's medical board
- Transport of mortal remains to home country
- House calls by a physician 24/7

UMS

\$100,000
 Up to 90 days
 Included, No co-pay
 -
 Only at Clalit laboratories
 Included, No co-pay
 At Clalit Smile Clinics
 Up to \$10,000
 Up to \$5,000
 Included, no co-pay



HEALTH INSURANCE FOR REICHMAN UNIVERSITY STUDENTS

[Home Page](#)

[Welcome](#)

[Orientation Week](#)

[Ulpan](#)

[Reichman University Dormitories](#)

[Health Insurance](#)

[Visa Information](#)

[Living in Israel](#)

[Tuition Fees and Terms of Payment](#)

[Scholarships and Financial Aid](#)

[Study Skills Center & Psychological counseling](#)

[Contact Info](#)

[Academic Calendar](#)

- MA Government | MA in HCI
- MSc Machine Learning
- MA in Financial Economics
- Global MBA
- One year MBA
- MBA Healthcare Innovation
- MA in Behavioral Economics

[Final Checklist](#)

Exclusions

- Incidents related to alcohol ingestion and/or illegal drug use.
- Pre-existing medical conditions
- Dental treatment
- Pregnancy and/or delivery
- Psychiatric and psychological care, including ADHD etc.
- The insurance is valid **only in the State of Israel***

Note: Infectious diseases, AIDS and sexually transmitted diseases, system-wide problems and cancer in the treatment stage require a separate, private insurance policy.

* If you are traveling outside of Israel, it is recommended to purchase an additional short-term travel insurance for the period of time abroad.

Harel Yedidim Insurance Company also offers various plans for Home Insurance, including laptop & other valuables, and third party liability insurance. For details and registration: Email y_health@yedidim.co.il

DISCLAIMER

REICHMAN UNIVERSITY TAKES NO RESPONSIBILITY FOR THE QUALITY OR THE CONSEQUENCES OF SERVICES RENDERED BY THIS COMPANY. REICHMAN UNIVERSITY ACTS IN THE CAPACITY OF OBJECTIVE RECOMMENDER ONLY.



[Home Page](#)

[Welcome](#)

[Orientation Week](#)

[Ulpan](#)

[Reichman University
Dormitories](#)

[Health Insurance](#)

[Visa Information](#)

[Living in Israel](#)

[Tuition Fees and
Terms of Payment](#)

[Scholarships and Financial Aid](#)

[Study Skills Center &
Psychological counseling](#)

[Contact Info](#)

[Academic Calendar](#)

- MA Government | MA in HCI
MSc Machine Learning
- MA in Financial Economics
- Global MBA
- One year MBA
- MBA Healthcare Innovation
- MA in Behavioral Economics

[Final Checklist](#)

VISA & STATUS INFORMATION

Students are responsible for clarifying and establishing their status in Israel and can turn to the Raphael Recanati International School staff for advice and assistance. Israeli visa requirements vary based on your country of citizenship. A student visa must be issued **in advance before your arrival to Israel, through the nearest Israeli consulate**. Please contact the nearest Israeli embassy / consulate for information regarding the exact procedure. Information for Israeli embassies and consulates around the world can be found [here](#).

The RRIS staff is here to help with the procedure and can provide students with certification of your status as an accepted student.

STUDENT VISA (A2)

A student visa is a multiple entry visa valid for one year after which time it can be renewed. To apply for a student visa you will likely be asked to provide:

- Passport valid for at least one year after required stay
- Letter of acceptance to Reichman University
- Visa application form (2 copies)
- Photographs (2)
- Visa fee
- Birth Certificate
- Proof of financial means to pay for studies and sustenance throughout stay in Israel
- Proof of health insurance to cover you in Israel, including COVID-19

Note: The Consul may request additional documents.

RETURNING ISRAELIS

Students who were born in Israel must contact the nearest Israeli Consulate for updated information. Regulations regarding this population change frequently.

NEW IMMIGRANT (*oleh chadash*)

You must check your **Israel Defense Forces (IDF) status**. In general, you might need to serve in the army (this depends on your age upon arrival in Israel) but may be able to defer your service until after you graduate. The Jewish Agency provides advice and assistance to students considering immigrating to Israel. For more information click [here](#). Contact and information for North America/UK can be found [here](#).

STUDENTS WHO HAVE AT LEAST ONE ISRAELI PARENT

Contact the nearest Israeli Consulate to check your Israeli Defense Forces (IDF) status, and to obtain an Israeli passport in order to enter and stay in Israel. Request a status of “child of emigrants” (*b’nei mehagrim*) from your local Israel Consulate. You may be eligible for a special status from the IDF as long as you are a student. For more details contact Shelly Levy at levys@runi.ac.il. Information for Israeli embassies and consulates around the world can be found [here](#).

[Home Page](#)

[Welcome](#)

[Orientation Week](#)

[Ulpan](#)

[Reichman University
Dormitories](#)

[Health Insurance](#)

[Visa Information](#)

[Living in Israel](#)

[Tuition Fees and
Terms of Payment](#)

[Scholarships and Financial Aid](#)

[Study Skills Center &
Psychological counseling](#)

[Contact Info](#)

[Academic Calendar](#)

- MA Government | MA in HCI
MSc Machine Learning
- MA in Financial Economics
- Global MBA
- One year MBA
- MBA Healthcare Innovation
- MA in Behavioral Economics

[Final Checklist](#)

LIVING IN ISRAEL

Moving to Israel can be exciting and challenging. A guide with basic information about banking, internet set up, transportation, mobile phones, etc., can be found in the [Counselor's Tip-Book](#).

SOCIAL & CULTURAL ACTIVITIES AT THE RRIS

The RRIS organizes a wide variety of social and cultural activities for all the students on campus in English!

Throughout the academic year the school hosts cultural events, performances, educational tours, social gatherings and more. For information about our extracurricular activities at the RRIS please visit our [website](#) page, on  and .

E-MAIL

RUNI E-mail Account:

During Orientation Week you will receive a RUNI e-mail account. RUNI e-mail addresses are usually in the following format:

firstname.lastname@post.runi.ac.il

Please note that this e-mail account is our primary form of contact with you and you are expected to check it on a regular basis. There are many computers available on campus and there are wireless hot spots in every building on campus.



[Home Page](#)

[Welcome](#)

[Orientation Week](#)

[Ulpan](#)

[Reichman University
Dormitories](#)

[Health Insurance](#)

[Visa Information](#)

[Living in Israel](#)

[Tuition Fees and
Terms of Payment](#)

[Scholarships and Financial Aid](#)

[Study Skills Center &
Psychological counseling](#)

[Contact Info](#)

[Academic Calendar](#)

- MA Government | MA in HCI
MSc Machine Learning
- MA in Financial Economics
- Global MBA
- One year MBA
- MBA Healthcare Innovation
- MA in Behavioral Economics

[Final Checklist](#)

TUITION FEES AND TERMS OF PAYMENT

GRADUATE DEGREES 2024-25

Dear Student,

Below please find all the necessary information regarding tuition regulations and payment options for the graduate degrees at Reichman University. Should you have any questions, you are welcome to contact the [Tuition office](#).

General Information:

- [Down Payment](#)
- [Scholarships / Discounts / Other Funding](#)
- [Health Insurance](#)
- [Student Union Fee](#)
- [Disclaimer](#)
- [Regulations and procedures for the cancellation or cessation of studies](#)
- [Tuition Department Reception Hours and Contact Details](#)

[MA Government](#)

[MBA Healthcare Innovation](#)

[One Year MBA](#)

[MA Financial Economics](#)

[Global MBA](#)

[MA in Human Computer Interaction](#)

[Msc Machine Learning & Data Science](#)

[MA in Behavioral Economics](#)

TUITION FEES AND TERMS OF PAYMENT

[Home Page](#)

[Welcome](#)

[Orientation Week](#)

[Ulpan](#)

[Reichman University Dormitories](#)

[Health Insurance](#)

[Visa Information](#)

[Living in Israel](#)

[Tuition Fees and Terms of Payment](#)

[Scholarships and Financial Aid](#)

[Study Skills Center & Psychological counseling](#)

[Contact Info](#)

[Academic Calendar](#)

- MA Government | MA in HCI
- MSc Machine Learning
- MA in Financial Economics
- Global MBA
- One year MBA
- MBA Healthcare Innovation
- MA in Behavioral Economics

[Final Checklist](#)

GENERAL INFORMATION

Down Payment

The down payment is due within **two weeks** from the date of your acceptance letter and is part of the total tuition fee. The down payment can be paid either by credit card, check or wire transfer to Reichman University's bank account. Please see below the payment options.

	<u>Graduate Programs Priced in \$USD</u>	<u>Graduate Programs Priced in NIS</u>
	One Year MBA MBA in Healthcare MA in Government	Global MBA MA in Financial Economics MA in HCI MSc in Machine Learning MA in Behavioral Economics
General	The down payment is due in USD. If you choose to pay the required amount in NIS, the value in USD will be determined according to the exchange rate on the day that the payment is received.	The down payment is due in NIS. If you choose to pay the required amount in \$USD, the value in NIS will be determined according to the exchange rate on the day that the payment is received.
Online Payment by Credit Card	Please enter the candidate info station (your login details can be found in your acceptance email) and click on Payments > Credit Card Payment Payment with an Israeli Credit Card allows 3-18 payments with interest.	Payment is possible in \$USD or in NIS. The down-payment amount will appear in the student's candidate info station in \$USD. If the amount is higher than the requested deposit amount in NIS, the extra amount will be transferred to cover the balance of your tuition fee. If the amount paid is lower than the requested down-payment amount in NIS, the difference in NIS will be added to the balance of your tuition payment.

TUITION FEES AND TERMS OF PAYMENT

[Home Page](#)

[Welcome](#)

[Orientation Week](#)

[Ulpan](#)

[Reichman University Dormitories](#)

[Health Insurance](#)

[Visa Information](#)

[Living in Israel](#)

[Tuition Fees and Terms of Payment](#)

[Scholarships and Financial Aid](#)

[Study Skills Center & Psychological counseling](#)

[Contact Info](#)

[Academic Calendar](#)

- MA Government | MA in HCI
- MSc Machine Learning
- MA in Financial Economics
- Global MBA
- One year MBA
- MBA Healthcare Innovation
- MA in Behavioral Economics

[Final Checklist](#)

Payment by check	Checks in USD are acceptable up to the amount of \$5,000 per check.	Checks in NIS are acceptable.
	<p>Please make the check out to Reichman University and send to the following address:</p> <p>Reichman University (CC) Tuition Department P.O. Box 167 Herzliya 4610101 Israel</p>	
Payment by wire transfer	<p>Please make out the wire transfer to:</p> <p>Beneficiary: Reichman University (CC) Bank: 12-Hapoalim Bank Branch: 628-Herzliya Branch Acct. No.: 244144 Swift Code : Poalilit IBAN: IL90-0126-2800-0000-0244-144</p> <p>A period of one week is necessary in order to receive confirmation of wire transfers. Make sure to indicate the applicant's name and ID/student number on the transaction document and email the confirmation to rris.master@runi.ac.il</p> <p>There may be an extra charge by the bank when wiring a payment. Applicants are responsible for paying any extra fees that may be deducted by the bank.</p>	

[Home Page](#)

[Welcome](#)

[Orientation Week](#)

[Ulpan](#)

[Reichman University
Dormitories](#)

[Health Insurance](#)

[Visa Information](#)

[Living in Israel](#)

[Tuition Fees and
Terms of Payment](#)

[Scholarships and Financial Aid](#)

[Study Skills Center &
Psychological counseling](#)

[Contact Info](#)

[Academic Calendar](#)

- MA Government | MA in HCI
MSc Machine Learning
- MA in Financial Economics
- Global MBA
- One year MBA
- MBA Healthcare Innovation
- MA in Behavioral Economics

[Final Checklist](#)

TUITION FEES AND TERMS OF PAYMENT

Scholarships / Discounts / Other Funding

Should a scholarship, Student Authority (Minhal HaStudentim) grant, or any other form of funding be granted to the student, the student should contact the tuition department in order to receive a revised payment plan.

Graduates of Reichman University Undergraduate Programs are entitled to a 10% discount from the total program tuition fees.

Health Insurance

The health insurance fee is 1600 \$USD¹ per academic year. For health insurance information (if required), please contact rris.insurance@runi.ac.il

¹ Price is subject to change

Student Union Fee

The Student Union fee is 200 NIS / 60 \$USD. This is a one-time payment. Should you decide not to be a member of the student union, please make sure to notify the Student Union Office in writing and sign a concession form no later than Nov. 22nd, 2024.

Disclaimer

Reichman University reserves the right to make changes to all the above-mentioned terms and regulations, without personally notifying all those concerned.

Tuition rates and additional fees are subject to change by Reichman University at its discretion, any time prior to the beginning of classes.

TUITION FEES AND TERMS OF PAYMENT

[Home Page](#)

[Welcome](#)

[Orientation Week](#)

[Ulpan](#)

[Reichman University
Dormitories](#)

[Health Insurance](#)

[Visa Information](#)

[Living in Israel](#)

[Tuition Fees and
Terms of Payment](#)

[Scholarships and Financial Aid](#)

[Study Skills Center &
Psychological counseling](#)

[Contact Info](#)

[Academic Calendar](#)

- MA Government | MA in HCI
MSc Machine Learning
- MA in Financial Economics
- Global MBA
- One year MBA
- MBA Healthcare Innovation
- MA in Behavioral Economics

[Final Checklist](#)

Regulations and procedures for the cancellation or cessation of studies

A student who has registered to study at Reichman University (RUNI) and has paid the down payment will be considered a Reichman University student in every respect. If extraordinary personal circumstances arise that prevent a student from fulfilling their commitment to study at Reichman University, the student can cancel their registration by submitting a notification in writing by e-mail and must confirm receipt by the department. In order to avoid any misunderstanding, **a telephone conversation will not be considered official notice of cessation of studies. Only a formal notice in writing from the student**, submitted to the Admissions Office, will be considered valid in this matter.

Reichman University will charge the student partial tuition, at a rate based on the date the notification was received. The exact dates are detailed below for each graduate program separately. The earlier Reichman University is notified, the less the student is charged.

Notification of cancellation, cessation or freezing of studies, at any date, will result in the cancellation of the student's entitlement to a scholarship or discounts, which will be cancelled retroactively according to the guidelines of the specific scholarship or discount.

Only after all of the instructions above are completed and all tuition payments are settled in accordance with the cancellation schedule, will the student's account be closed.

[Home Page](#)

[Welcome](#)

[Orientation Week](#)

[Ulpan](#)

[Reichman University
Dormitories](#)

[Health Insurance](#)

[Visa Information](#)

[Living in Israel](#)

[Tuition Fees and
Terms of Payment](#)

[Scholarships and Financial Aid](#)

[Study Skills Center &
Psychological counseling](#)

[Contact Info](#)

[Academic Calendar](#)

- MA Government | MA in HCI
MSc Machine Learning
- MA in Financial Economics
- Global MBA
- One year MBA
- MBA Healthcare Innovation
- MA in Behavioral Economics

[Final Checklist](#)

TUITION FEES AND TERMS OF PAYMENT

Tuition Department Reception Hours and Contact Details

Sun. until Thurs. 10:00-13:00 and 15:00-16:00

Ms. Ronit Izak

izakr@runi.ac.il

MA in Financial Economics

GMBA

MA Government

MA in HCI

MA in Behavioral Economics

One Year MBA

Ms. Nathalie Burstein

Nathalie.Burstein@runi.ac.il

MBA Healthcare

Organizational Behavior and Development

Ms. Sharon Kupferberg

sharon.kupferberg@runi.ac.il

M.Sc in Machine Learning

General

tuition@runi.ac.il

fax: +972-9-9527640

TUITION FEES AND TERMS OF PAYMENT

MA GOVERNMENT 2024-2025

[Home Page](#)

[Welcome](#)

[Orientation Week](#)

[Ulpan](#)

[Reichman University
Dormitories](#)

[Health Insurance](#)

[Visa Information](#)

[Living in Israel](#)

[Tuition Fees and
Terms of Payment](#)

[Scholarships and Financial Aid](#)

[Study Skills Center &
Psychological counseling](#)

[Contact Info](#)

[Academic Calendar](#)

- MA Government | MA in HCI
- MSc Machine Learning
- MA in Financial Economics
- Global MBA
- One year MBA
- MBA Healthcare Innovation
- MA in Behavioral Economics

[Final Checklist](#)

Tuition & Expenses	Price USD
MA Government Counter Terrorism / Diplomacy / Research Tuition	\$14,700*
MA Government, specialization with Thesis Tuition	\$15,900*
Optional	
Health Insurance for foreign students for one academic year	\$1,600
Student Union Fee	\$60**

*The \$2000 down payment is part of the total tuition fee. Students who pay in NIS, please note that the value in USD will be determined according to the exchange rate on the day the payment is received. Should you decide not to be a member of the Student Union, please make sure to notify the Student Union and sign a concession form no later than Nov. 22, 2024.

TERMS OF PAYMENT

Tuition can be paid in one single payment by the beginning of the academic year or can be split in up to 12 equal payments after the \$2000 down payment. Monthly payments begin in November 2024 and should be completed by October 2025. The first tuition payment includes a \$60 fee for the Student Union.

REGULATIONS FOR THE CANCELLATION, CESSATION OR FREEZING OF STUDIES INITIATED BY REICHMAN UNIVERSITY OR BY THE STUDENT

Date of notification	Amount to be charged
By July 21, 2024	No charge. Full refund of down payment
July 22 - Aug. 26, 2024	25% of down payment
Aug. 27 - Sept. 17, 2024	50% of down payment
Sept. 18 - Oct. 13, 2024	75% of down payment
Oct. 14 - Nov. 3, 2024	100% down payment
Nov. 4, 2024 - Feb. 2, 2025	25% of tuition fee
Feb. 3 - March 23, 2025	50% of tuition fee
March 24 - July 6, 2025	75% of tuition fee
From July 7, 2025	100% tuition fee

Notification of cancellation or freezing of studies, at any date, will result in the cancellation of the student's entitlement to a scholarship. The scholarship will be cancelled retroactively.

TUITION FEES AND TERMS OF PAYMENT

MBA HEALTHCARE INNOVATION 2024-2025

[Home Page](#)

[Welcome](#)

[Orientation Week](#)

[Ulpan](#)

[Reichman University Dormitories](#)

[Health Insurance](#)

[Visa Information](#)

[Living in Israel](#)

[Tuition Fees and Terms of Payment](#)

[Scholarships and Financial Aid](#)

[Study Skills Center & Psychological counseling](#)

[Contact Info](#)

[Academic Calendar](#)

- MA Government | MA in HCI
- MSc Machine Learning
- MA in Financial Economics
- Global MBA
- One year MBA
- MBA Healthcare Innovation
- MA in Behavioral Economics

[Final Checklist](#)

Tuition & Expenses	Price USD
MBA Healthcare Innovation Tuition	\$28,500*
Optional	
Health Insurance for foreign students for one academic year	\$1,600
Student Union Fee	\$60

* The \$2300 down payment is part of the total tuition fee. Students who pay in NIS, please note that the value in USD will be determined according to the exchange rate on the day the payment is received. Should you decide not to be a member of the Student Union, please make sure to notify the Student Union and sign a concession form no later than Nov. 22, 2024.

TERMS OF PAYMENT

Tuition can be paid in one single payment by the beginning of the academic year or can be split in up to 12 payments after the \$2,300 down payment. Monthly payments begin in November 2024 and should be completed by October 2025. Please make sure to add \$60 Student Union fee to the first payment following the down payment.

REGULATIONS FOR THE CANCELLATION, CESSATION OR FREEZING OF STUDIES INITIATED BY REICHMAN UNIVERSITY OR BY THE STUDENT

Date of notification	Amount to be charged
By Aug 06, 2024	No charge. Full refund of down payment
Aug 07 - Aug 29, 2024	25% of down payment
Aug 30 - Sept 29, 2024	50% of down payment
Sept 30 - Oct 13, 2024	75% of down payment
Oct 14 - Nov 10, 2024	100% down payment
Nov 11, 2024 - Jan 05, 2025	15% of tuition fee
Jan 06 - March 03, 2025	25% of tuition fee
March 04 - June 30, 2025	50% of tuition fee
July 1, 2025- March 1, 2026	75% of tuition fee
From March 2, 2026	100% tuition fee

Notification of cancellation or freezing of studies, at any date, will result in the cancellation of the student's entitlement to a scholarship. The scholarship will be cancelled retroactively.

TUITION FEES AND TERMS OF PAYMENT

ONE-YEAR MBA 2024-2025

[Home Page](#)

[Welcome](#)

[Orientation Week](#)

[Ulpan](#)

[Reichman University
Dormitories](#)

[Health Insurance](#)

[Visa Information](#)

[Living in Israel](#)

[Tuition Fees and
Terms of Payment](#)

[Scholarships and Financial Aid](#)

[Study Skills Center &
Psychological counseling](#)

[Contact Info](#)

[Academic Calendar](#)

- MA Government | MA in HCI
MSc Machine Learning
- MA in Financial Economics
- Global MBA
- One year MBA
- MBA Healthcare Innovation
- MA in Behavioral Economics

[Final Checklist](#)

Tuition & Expenses	Price USD
One Year MBA Tuition	\$28,500*
Optional	
Health Insurance for foreign students for one academic year	\$1,600
Student Union Fee	\$60

* The \$2000 down payment is part of the total tuition fee. Students who pay in NIS, please note that the value in USD will be determined according to the exchange rate on the day the payment is received. Should you decide not to be a member of the Student Union, please make sure to notify the Student Union and sign a concession form no later than Nov. 22, 2024.

TERMS OF PAYMENT

Tuition can be paid in one single payment by the beginning of the academic year or can be split in up to 12 payments after the \$2,000 down payment. Monthly payments begin in November 2024 and should be completed by October 2025. Please make sure to add \$60 Student Union fee to the first payment following the down payment.

REGULATIONS FOR THE CANCELLATION, CESSATION OR FREEZING OF STUDIES INITIATED BY REICHMAN UNIVERSITY OR BY THE STUDENT

Date of notification	Amount to be charged
By Aug 06, 2024	Full refund of down payment if cancel by this date
Aug. 07 - Aug 29 ,2024	25% of down payment
Aug. 30 - Sept. 29 ,2024	50% of down payment
Sept. 30 - Oct.13, 2024	75% of down payment
Oct. 14 - Nov. 10, 2024	100% down payment
Nov. 11 ,2024 - Jan. 05 ,2025	25% of tuition fee
Jan. 06 - Mar. 03, 2025	50% of tuition fee
March 04 - June 15 ,2025	75% of tuition fee
From June 16, 2025	100% tuition fee

Notification of cancellation or freezing of studies, at any date, will result in the cancellation of the student's entitlement to a scholarship. The scholarship will be cancelled retroactively.

TUITION FEES AND TERMS OF PAYMENT

MA FINANCIAL ECONOMICS 2024-2025

[Home Page](#)

[Welcome](#)

[Orientation Week](#)

[Ulpan](#)

[Reichman University Dormitories](#)

[Health Insurance](#)

[Visa Information](#)

[Living in Israel](#)

[Tuition Fees and Terms of Payment](#)

[Scholarships and Financial Aid](#)

[Study Skills Center & Psychological counseling](#)

[Contact Info](#)

[Academic Calendar](#)

- MA Government | MA in HCI
- MSc Machine Learning
- MA in Financial Economics
- Global MBA
- One year MBA
- MBA Healthcare Innovation
- MA in Behavioral Economics

[Final Checklist](#)

Tuition & Expenses	Price
MA Financial Economics Tuition	77,900 NIS*

Optional

Health Insurance for foreign students for one academic year	\$1,600
Student Union Fee	200 NIS

* The 9,900 NIS down payment is part of the total tuition fee.

Should you decide not to be a member of the Student Union, please make sure to notify the Student Union and sign a concession form no later than Nov. 22, 2024.

* Sum to be paid by the first day of classes or in 12 equal payments starting November 2024. **Please note that additional charges for interest and management fees will be added if you pay in installments.**

TERMS OF PAYMENT

Tuition can be paid in one single payment by the beginning of the academic year or can be split in up to 12 payments after the 9,900 NIS down payment. **Please note that additional charges for interest and management fees will be added if you pay in installments.** Monthly payments begin in November 2024 and should be completed by October 2025.

Please make sure to add 200 NIS Student Union fee to the first payment following the down payment.

REGULATIONS FOR THE CANCELLATION, CESSATION OR FREEZING OF STUDIES INITIATED BY REICHMAN UNIVERSITY OR BY THE STUDENT

Date of notification	Amount to be charged	
By Aug 06, 2024	No charge. Full refund of down payment	
Aug 07 - Aug 29, 2024	25% of down payment	
Aug 30 - Sept 29, 2024	50% of down payment	
Sept 30 - Oct 13, 2024	75% of down payment	
Oct 14- Nov 10, 2024	100% down payment	
Nov 11, 2024 - Jan 05, 2025	15% of tuition fee	Notification of cancellation or freezing of studies, at any date, will result in the cancellation of the student's entitlement to a scholarship. The scholarship will be cancelled retroactively.
Jan 06 - March 03, 2025	25% of tuition fee	
March 04 - June 30, 2025	50% of tuition fee	
July 1 - Aug 10, 2025	75% of tuition fee	
From Aug. 11, 2025	100% tuition fee	

TUITION FEES AND TERMS OF PAYMENT

GLOBAL MBA 2024-2025

[Home Page](#)

[Welcome](#)

[Orientation Week](#)

[Ulpan](#)

[Reichman University Dormitories](#)

[Health Insurance](#)

[Visa Information](#)

[Living in Israel](#)

[Tuition Fees and Terms of Payment](#)

[Scholarships and Financial Aid](#)

[Study Skills Center & Psychological counseling](#)

[Contact Info](#)

[Academic Calendar](#)

- MA Government | MA in HCI
- MSc Machine Learning
- MA in Financial Economics
- Global MBA
- One year MBA
- MBA Healthcare Innovation
- MA in Behavioral Economics

[Final Checklist](#)

Tuition & Expenses	Price
GMBA Tuition	104,900 NIS*
Optional	
Health Insurance for foreign students for one academic year	5,600 NIS
Student Union Fee	200 NIS**

* The 9,900 NIS down payment is part of the total tuition fee. Students who pay in US dollars, please note that the value in shekels will be determined according to the exchange rate on the day the payment is received.

* Sum to be paid by the first day of classes or in 18 equal payments starting November 2024. **Please note that additional charges for interest and management fees will be added if you pay in installments.**

**Should you decide not to be a member of the Student Union, please make sure to notify the Student Union and sign a concession form no later than Nov. 22, 2024.

TERMS OF PAYMENT

Tuition can be paid in one single payment by the beginning of the academic year or can be split in up to 18 payments after the 9900 NIS down payment. **Please note that additional charges for interest and management fees will be added if you pay in installments.** Monthly payments begin in November 2024 and should be completed by April 2026. Please make sure to add 200 NIS Student Union fee to the first payment following the down payment.

REGULATIONS FOR THE CANCELLATION, CESSATION OR FREEZING OF STUDIES INITIATED BY REICHMAN UNIVERSITY OR BY THE STUDENT

Date of notification	Amount to be charged	
By Aug 06, 2024	No charge. Full refund of down payment	
Aug 07 - Aug 29, 2024	25% of down payment	Notification of cancellation or freezing of studies, at any date, will result in the cancellation of the student's entitlement to a scholarship. The scholarship will be cancelled retroactively.
Aug 30 - Sept 29, 2024	50% of down payment	
Sept 30 - Oct 13, 2024	75% of down payment	
Oct 14 - Nov 10, 2024	100% down payment	
Nov 11, 2024 - Jan 05, 2025	15% of tuition fee	
Jan 06 - March 03, 2025	25% of tuition fee	
March 04 - June 30, 2025	50% of tuition fee	
July 1, 2025- March 1, 2026	75% of tuition fee	
From March 2, 2026	100% tuition fee	

TUITION FEES AND TERMS OF PAYMENT

MA HUMAN-COMPUTER INTERACTION (HCI) 2024-2025

[Home Page](#)

[Welcome](#)

[Orientation Week](#)

[Ulpan](#)

[Reichman University Dormitories](#)

[Health Insurance](#)

[Visa Information](#)

[Living in Israel](#)

[Tuition Fees and Terms of Payment](#)

[Scholarships and Financial Aid](#)

[Study Skills Center & Psychological counseling](#)

[Contact Info](#)

[Academic Calendar](#)

- MA Government | MA in HCI
- MSc Machine Learning
- MA in Financial Economics
- Global MBA
- One year MBA
- MBA Healthcare Innovation
- MA in Behavioral Economics

[Final Checklist](#)

Tuition & Expenses	Price
MA HCI Tuition	77,900 NIS*
Optional	
Health Insurance for foreign students for one academic year	5,600 NIS
Student Union Fee	200 NIS**

* The 8,000 NIS down payment is part of the total tuition fee.

* Sum to be paid by the first day of classes or in 12 equal payments starting November 2024. **Please note that additional charges for interest and management fees will be added if you pay in installments.** Students who pay in US dollars, please note that the value in shekels will be determined according to the exchange rate on the day the payment is received.

**Should you decide not to be a member of the Student Union, please make sure to notify the Student Union and sign a concession form no later than Nov. 22, 2024.

TERMS OF PAYMENT

Tuition can be paid in one single payment by the beginning of the school year or can be split in up to 12 payments after the 8,000 NIS down payment. **Please note that additional charges for interest and management fees will be added if you pay in installments.** Monthly payments begin in November 2024 and should be completed by October 2025. The first tuition payment includes a 200 NIS fee for the Student Union.

REGULATIONS FOR THE CANCELLATION, CESSATION OR FREEZING OF STUDIES INITIATED BY REICHMAN UNIVERSITY OR BY THE STUDENT

Date of notification	Amount to be charged	
By July 21, 2024	No charge. Full refund of down payment	
July 22 - Aug. 26, 2024	25% of down payment	Notification of cancellation or freezing of studies, at any date, will result in the cancellation of the student's entitlement to a scholarship. The scholarship will be cancelled retroactively.
Aug. 27 - Sept. 17, 2024	50% of down payment	
Sept. 18 - Oct. 13, 2024	75% of down payment	
Oct. 14 - Nov. 3, 2024	100% down payment	
Nov. 4, 2024 - Feb. 2, 2025	25% of tuition fee	
Feb. 3 - March 23, 2025	50% of tuition fee	
March 24 - July 6, 2025	75% of tuition fee	
From July 7, 2025	100% tuition fee	

TUITION FEES AND TERMS OF PAYMENT

MSc MACHINE LEARNING and DATA SCIENCE 2024-2025

[Home Page](#)

[Welcome](#)

[Orientation Week](#)

[Ulpan](#)

[Reichman University Dormitories](#)

[Health Insurance](#)

[Visa Information](#)

[Living in Israel](#)

[Tuition Fees and Terms of Payment](#)

[Scholarships and Financial Aid](#)

[Study Skills Center & Psychological counseling](#)

[Contact Info](#)

[Academic Calendar](#)

- MA Government | MA in HCI
MSc Machine Learning
- MA in Financial Economics
- Global MBA
- One year MBA
- MBA Healthcare Innovation
- MA in Behavioral Economics

[Final Checklist](#)

Tuition & Expenses	Price
MSc Machine Learning Tuition	74,200 NIS*

Optional	
Health Insurance for foreign students for one academic year	5,600 NIS
Student Union Fee	200 NIS**

- * The 8,000 NIS down payment is part of the total tuition fee. Students who pay in US dollars, please note that the value in shekels will be determined according to the exchange rate on the day the payment is received.
- * Sum to be paid by the first day of classes or in 12 equal payments starting November 2024. **Please note that additional charges for interest and management fees will be added if you pay in installments.**
- ** Should you decide not to be a member of the Student Union, please make sure to notify the Student Union and sign a concession form no later than Nov. 22. 2024.

TERMS OF PAYMENT

Tuition can be paid in one single payment by the beginning of the school year or can be split in up to 12 payments after the 8,000 NIS down payment. **Please note that additional charges for interest and management fees will be added if you pay in installments.** Monthly payments begin in November 2024 and should be completed by October 2025. The first tuition payment includes a 200 NIS fee for the Student Union.

REGULATIONS FOR THE CANCELLATION, CESSATION OR FREEZING OF STUDIES INITIATED BY REICHMAN UNIVERSITY OR BY THE STUDENT

Date of notification	Amount to be charged	
By July 17, 2024	No charge. Full refund of down payment	
July 18 - Aug. 20, 2024	25% of down payment	
Aug. 21 - Sept. 11, 2024	50% of down payment	
Sept. 12 - Sept. 30, 2024	75% of down payment	
Oct. 1 - Nov. 3, 2024	100% down payment	
Nov. 4, 2024 - March 23, 2025	25% of tuition fee	Notification of cancellation or freezing of studies, at any date, will result in the cancellation of the student's entitlement to a scholarship. The scholarship will be cancelled retroactively.
March 24 - July 6, 2025	50% of tuition fee	
July 7 - Dec 24, 2025	75% of tuition fee	
From Dec 25, 2025	100% tuition fee	

TUITION FEES AND TERMS OF PAYMENT

MA BEHAVIORAL ECONOMICS 2024-2025

[Home Page](#)

[Welcome](#)

[Orientation Week](#)

[Ulpan](#)

[Reichman University
Dormitories](#)

[Health Insurance](#)

[Visa Information](#)

[Living in Israel](#)

[Tuition Fees and
Terms of Payment](#)

[Scholarships and Financial Aid](#)

[Study Skills Center &
Psychological counseling](#)

[Contact Info](#)

[Academic Calendar](#)

- MA Government | MA in HCI
MSc Machine Learning
- MA in Financial Economics
- Global MBA
- One year MBA
- MBA Healthcare Innovation
- MA in Behavioral Economics

[Final Checklist](#)

Tuition & Expenses	Price
MA Behavioral Economics Tuition	63,000 NIS*

Optional

Health Insurance for foreign students for one academic year	5,600 NIS
Student Union Fee	200 NIS

* The 8000 NIS down payment is part of the total tuition fee. Should you decide not to be a member of the Student Union, please make sure to notify the Student Union and sign a concession form no later than Nov. 22. 2024.

* Sum to be paid by the first day of classes or in 12 equal payments starting November 2024. **Please note that additional charges for interest and management fees will be added if you pay in installments.**

TERMS OF PAYMENT

Tuition can be paid in one single payment by the beginning of the academic year or can be split in up to 12 payments after the 8,000 NIS down payment. **Please note that additional charges for interest and management fees will be added if you pay in installments.** Monthly payments begin in November 2024 and should be completed by October 2025.

Please make sure to add 200 NIS Student Union fee to the first payment following the down payment.

REGULATIONS FOR THE CANCELLATION, CESSATION OR FREEZING OF STUDIES INITIATED BY REICHMAN UNIVERSITY OR BY THE STUDENT

Date of notification	Amount to be charged	
By Aug 06, 2024	No charge. Full refund of down payment	
Aug 07 - Aug 29, 2024	25% of down payment	
Aug 30 - Sept 29, 2024	50% of down payment	
Sept 30 - Oct 13, 2024	75% of down payment	
Oct 14 - Nov 10, 2024	100% down payment	
Nov 11, 2024 - Jan 05, 2025	15% of tuition fee	Notification of cancellation or freezing of studies, at any date, will result in the cancellation of the student's entitlement to a scholarship. The scholarship will be cancelled retroactively.
Jan 06 - March 03, 2025	25% of tuition fee	
March 04 - June 30, 2025	50% of tuition fee	
July 1, 2025 - Feb 15, 2026	75% of tuition fee	
From Feb 16, 2026	100% tuition fee	

SCHOLARSHIPS AND FINANCIAL AID

[Home Page](#)

[Welcome](#)

[Orientation Week](#)

[Ulpan](#)

[Reichman University
Dormitories](#)

[Health Insurance](#)

[Visa Information](#)

[Living in Israel](#)

[Tuition Fees and
Terms of Payment](#)

[Scholarships and Financial Aid](#)

[Study Skills Center &
Psychological counseling](#)

[Contact Info](#)

[Academic Calendar](#)

- MA Government | MA in HCI
MSc Machine Learning
- MA in Financial Economics
- Global MBA
- One year MBA
- MBA Healthcare Innovation
- MA in Behavioral Economics

[Final Checklist](#)

There are various scholarships and grants available to our students. We recommend that you check what scholarships or grants are available in your country for studies abroad. For further assistance, please contact **Annette Behrendt-van Zeeland** or **Lisa Sharon**, from the Financial Aid Department, at rris.financialaid@runi.ac.il

JEWISH TOURIST

Jewish tourists between the ages of 18-30 who have not been in Israel on a prior long-term program are eligible for grants and scholarships through the Masa Project. Please note: once you make *Aliyah* you are not eligible for this grant so please check this out before making *Aliyah*! More information and application forms at: www.masaisrael.org

NEW IMMIGRANTS (*olim hadashim*)

New immigrants starting their BA studies before the age of **30** and within 36 months of making *Aliyah* are eligible for a grant from the Israeli government spread out over two and a half years (plus an additional half year grant with community service). Please see [here](#) for more information.

If you are in Israel, you can contact the *minhal hastudentim* directly at tastudents@moia.gov.il

Please contact the RRIS absorption team at levys@runi.ac.il for any additional questions you may have.

FORMER IDF SOLDIERS

• Joshua M. Rosen Foundation scholarship for former lone soldiers

To honor the memory of Josh Rosen z"l, former lone soldier & IDC student MA student, the Joshua M. Rosen Foundation was established. The foundation provides scholarships for former lone soldiers who have been accepted to the MA Government programs of Reichman University. For more info and registration, please contact Annette Behrendt of the RRIS Financial Aid office.

• HESEG

Former Lone Soldiers, within two years of release date from the IDF, are eligible for a scholarship of full tuition and monthly allowance. This is the army's merit scholarship given prior to the first academic year and is for a period of three years. Registration from March 1 until June 30 on the web: www.heseg.com

SCHOLARSHIPS AND FINANCIAL AID

Home Page

Welcome

Orientation Week

Ulpan

Reichman University
Dormitories

Health Insurance

Visa Information

Living in Israel

Tuition Fees and
Terms of Payment

Scholarships and Financial Aid

Study Skills Center &
Psychological counseling

Contact Info

Academic Calendar

- MA Government | MA in HCI
MSc Machine Learning
- MA in Financial Economics
- Global MBA
- One year MBA
- MBA Healthcare Innovation
- MA in Behavioral Economics

Final Checklist

COUNTRY OF ORIGIN

- **Israel** - Students born and raised in Israel should contact Galit Zvi, Head of the Scholarship Department, at gzvi@runi.ac.il for information regarding available scholarships.

- **USA** - Citizen students may apply for a Free Application for Federal Student Aid (FAFSA) loans and/or Sallie Mae loans. They may be eligible for Direct Stafford Loans (Subsidized, Unsubsidized and Plus loans) as part of the Direct Loans program of the US Department of Education. As a foreign school, our students are not eligible for FAFSA grants or Pell. Our School Code is G40703 and our school name is Raphael Recanati International School. Students can fill out their 2024-2025 FAFSA application starting December 2023: www.fafsa.ed.gov. For Consumer Information (process, school code, policies, and regulations) [see here](#) for our 23-24 brochure. Please contact Rina Haller by email at rina@aforu.org with questions and to start the process. We do not automate FAFSA loans, students must contact Rina if interested in borrowing loans. Loan packages for students for 2024-2025 will not be processed until Summer 2024 and our deadline is April 1, 2025. Please note, that tuition, health insurance, and dorms fees can be paid with US COLLEGE FUNDS such as the 529 College Funds Plans, Florida prepaid funds, and other similar college funds. Please be directly in touch with the North American office by e-mail at rris.us@runi.ac.il.

- **South Africa** - TELFED provides scholarship to South African students. Please contact: info@telfed.org.il. You may also apply for the SAM COHEN Trust for South African students studying in Israel. More information and forms at: mail@papilsky.co.za

- **Holland** - Students who emigrated from the Netherlands to Israel or have at least one parent/grandparent who immigrated to Israel from the Netherlands may apply. Application online is available from the beginning of the academic year until the end of December at: www.milga-nl.org.il

- **Canada** - SAP (Students Assistance Programs) offers loans and scholarships to Canadian students. [Financial aid](#) is also available through your province. For further information visit [here](#).

- **Denmark** - The Danish-Israeli study Foundation offers scholarships for Danish citizens with permanent residency in Israel. The student will have to fill out an application at [here](#).

- **Finland** - The Finnish government offers loans for Finnish students with very convenient terms. The student needs to apply directly to www.kela.fi.

- **Germany** - The German government offers a monthly allowance. The student's parents need to apply directly: [BAföG scholarship](#), [ELES scholarship](#).

- **Sweden** - CSN offers 2/3 Loan and 1/3 Grant to Swedish students. The student needs to apply directly www.csn.se.

For the full list of scholarships please see
[Financial Aid and Scholarships Graduate Programs](#)

THE LEA AND NAFTALI BEN-YEHUDA ACCESSIBILITY & STUDY SKILLS CENTER

[Home Page](#)

[Welcome](#)

[Orientation Week](#)

[Ulpan](#)

[Reichman University
Dormitories](#)

[Health Insurance](#)

[Visa Information](#)

[Living in Israel](#)

[Tuition Fees and
Terms of Payment](#)

[Scholarships and Financial Aid](#)

[Study Skills Center &
Psychological counseling](#)

[Contact Info](#)

[Academic Calendar](#)

- MA Government | MA in HCI
- MSc Machine Learning
- MA in Financial Economics
- Global MBA
- One year MBA
- MBA Healthcare Innovation
- MA in Behavioral Economics

[Final Checklist](#)

The Lea and Naftali Ben-Yehuda Accessibility & Study Skill Center assists students recognized by the dean of students as students with learning issues and attention deficit disorders, students with physical, emotional, sensory, or cognitive disabilities, and students that are dealing with a temporary or permanent medical issue that has functional repercussions to studying.

Academic learning strategies:

Learning How To Learn - Free modular training units developed specifically for students at Reichman University. The training units are based on brain research and learning and provide practical tools for academic success. Offering students best practices for both online and on campus studying.

Teaching learning skills - one on one:

Every student is welcome to enjoy one on one meetings with a professional teacher who specializes in learning strategies.

Academic accessibility counseling one on one:

Students with sensory, physical, or other disabilities caused by a chronic disease with direct implication on academic study abilities are invited to contact the academic accessibility coordinator, to schedule a personal meeting.

Accommodations and accessibility due to Medical Disabilities:

Every student can receive the accommodation they need, the applications are to be submitted by the date advertised on [web page](#) and in student announcements. We recommend submitting the application as soon as possible.

Students are most welcome to join activities during the semester. You can read more information in our [website](#).

For more information please refer to our [web page](#) or send an email to negishut@runi.ac.il or call us: +972-9-9602738

THE LEAH AND ITZHAK SHECHTER CENTER FOR PSYCHOLOGICAL COUNSELING SERVICES

[Home Page](#)

[Welcome](#)

[Orientation Week](#)

[Ulpan](#)

[Reichman University
Dormitories](#)

[Health Insurance](#)

[Visa Information](#)

[Living in Israel](#)

[Tuition Fees and
Terms of Payment](#)

[Scholarships and Financial Aid](#)

[Study Skills Center &
Psychological counseling](#)

[Contact Info](#)

[Academic Calendar](#)

- MA Government | MA in HCI
MSc Machine Learning
- MA in Financial Economics
- Global MBA
- One year MBA
- MBA Healthcare Innovation
- MA in Behavioral Economics

[Final Checklist](#)

The Center for Psychological Counseling Services provides interested students with the opportunity to receive help and support dealing with various problems and challenges that students may encounter during the period of their studies.

Students who apply to the center may receive **short-term counseling** or up to two semesters of ongoing therapy through personal meetings with professionals who have extensive experience treating students from a wide variety of cultures and backgrounds. Group meetings or workshops dealing with concerns relevant to students may also be available.

What are the most common problems for which students apply for counseling?

Students apply for personal counseling for a wide variety of reasons, which may include the following: culture shock or experiencing difficulty coping with the many challenges inherent in being in a new and unfamiliar environment; difficulties with school or job; struggling with personal or professional identity; social, interpersonal, or romantic difficulties; dealing with grief or loss; problems occurring in the family which have a stressful impact, such as illness, divorce, or financial crisis; feeling overly anxious or depressed; coping with attention deficit disorder and/or learning disabilities. These problems may be new to the student or may be issues from the past that are resurfacing or intensifying when students are far from home and/or feeling alone and isolated.

Sometimes due to a student's particular circumstances, he or she might be better served by seeing a professional in the community. In these cases, the student will receive help with an appropriate referral.

Students interested in booking an initial consultation are kindly requested to contact our administrative coordinator, tel.: +972-9-960-2872 email: psyhelp@runi.ac.il.

Please note that the Psychological Counseling Services are not equipped to provide long-term care for students who need continuous psychological or psychiatric support. Therefore, students dealing with ongoing mental health issues are strongly advised to set up a professional support system before coming to Israel. We are happy to provide more information about the various options if needed.

For more information regarding our services, please see our [website](#).

THE LEAH AND ITZHAK SHECHTER CENTER FOR PSYCHOLOGICAL COUNSELING SERVICES

[Home Page](#)

[Welcome](#)

[Orientation Week](#)

[Ulpan](#)

[Reichman University Dormitories](#)

[Health Insurance](#)

[Visa Information](#)

[Living in Israel](#)

[Tuition Fees and Terms of Payment](#)

[Scholarships and Financial Aid](#)

[Study Skills Center & Psychological counseling](#)

[Contact Info](#)

[Academic Calendar](#)

- MA Government | MA in HCI
- MSc Machine Learning
- MA in Financial Economics
- Global MBA
- One year MBA
- MBA Healthcare Innovation
- MA in Behavioral Economics

[Final Checklist](#)

EXAM ACCOMMODATIONS FOR LEARNING DISABILITIES/ADHD

Reasonable accommodations are provided by Reichman University to students who have been diagnosed with learning disabilities or attention deficit disorder. The accommodations are awarded to minimize as much as possible the negative effects that these difficulties can have on students' performance, while simultaneously maintaining the exam's reliability and validity. Therefore, the exam accommodations that the University provides are designed such that they do not alter the essential character of the exams, i.e., the scope of the material tested, or the essence of the exams' demands upon students (for example, comprehension, applying knowledge, etc.).

All students dealing with a learning disability and/or ADHD who wish to apply for exam accommodations must submit relevant documentation. International students dealing with a learning disability and/or ADHD must submit acceptable documentation according to the guidelines listed on our website, under [Students with Learning Disabilities](#). After the documentation has been submitted, a meeting with a psychologist from the Counseling Center will be scheduled where the eligibility for specific accommodations will be discussed. Documents must be submitted no later than five weeks before the end of the semester in order to guarantee the request will be processed in time for that semester's exams.

Students who finished high school in Israel and completed the Bagrut in Hebrew, who wish to receive accommodations, are obligated to submit a particular kind of diagnostic report called MATAL. Please make sure you get all the information about the MATAL evaluation process, how it works, who it applies to, and who might be exempt, by referring to the [Hebrew website](#).

[Home Page](#)

[Welcome](#)

[Orientation Week](#)

[Ulpan](#)

[Reichman University
Dormitories](#)

[Health Insurance](#)

[Visa Information](#)

[Living in Israel](#)

[Tuition Fees and
Terms of Payment](#)

[Scholarships and Financial Aid](#)

[Study Skills Center &
Psychological counseling](#)

[Contact Info](#)

[Academic Calendar](#)

- MA Government | MA in HCI
MSc Machine Learning
- MA in Financial Economics
- Global MBA
- One year MBA
- MBA Healthcare Innovation
- MA in Behavioral Economics

[Final Checklist](#)

CONTACT INFORMATION

Do not hesitate to contact us if you have any questions regarding the information in this booklet. Please note that our offices are closed on weekends which are Friday and Saturday in Israel.

Jonathan Davis

Vice President for External Relations
Head, Raphael Recanati
International School
jonathand@runi.ac.il
+972-9-960-2714

Carine Katz

Director, Raphael Recanati
International School
ckatz@runi.ac.il
+972-9-960-2806

Sarit Ben-Or

Program Coordinator
sbenor@runi.ac.il
+972-9-960-2771

Liron Tzour

Director of International Marketing
Liron.Tzour@runi.ac.il
+972-9-952-7261

Adaya Hoffman

International Marketing Coordinator
adaya.hoffman@runi.ac.il
+972-9-960-2752

Stephanie Miller

Head of Admissions at RRIS
smiller@runi.ac.il
+972-9-960-2841

Valerie Susskind

Academic Admissions Officer
MA Government
MA HCI
MSc Machine Learning
valerie.susskind@runi.ac.il
+972 9 952 7658

Emmanuelle Bendenoun

Academic Admissions Officer
MA Financial Economics
GMBA
One-Year MBA
MBA Healthcare Innovation
MA Behavioral Economics
emmanuelle.bendenoun@runi.ac.il
+972 9 960 2801

Natalie Golan-Aubrey

Director of Recruitment and Marketing,
North America
rris.us@runi.ac.il
natalie@afidc.org
+1-212-213-5962

Rina Haller

Manager of Financial Aid,
North America
Rina@afidc.org
+1-212-213-5961

CONTACT INFORMATION

[Home Page](#)

[Welcome](#)

[Orientation Week](#)

[Ulpan](#)

[Reichman University
Dormitories](#)

[Health Insurance](#)

[Visa Information](#)

[Living in Israel](#)

[Tuition Fees and
Terms of Payment](#)

[Scholarships and Financial Aid](#)

[Study Skills Center &
Psychological counseling](#)

[Contact Info](#)

[Academic Calendar](#)

- MA Government | MA in HCI
MSc Machine Learning
- MA in Financial Economics
- Global MBA
- One year MBA
- MBA Healthcare Innovation
- MA in Behavioral Economics

[Final Checklist](#)

STUDENT AFFAIRS & WELL-BEING

Sylvia Kassoff

Director of Student Affairs and
Well-being
sylvia@runi.ac.il
+972-9-960-2420

Shelly Levy

Student Affairs Senior Advisor
levys@runi.ac.il
+972-9-960-2880

Kineret Benjamin

Student Affairs Advisor
kineret.benjamin@runi.ac.il
+972-9-952-7657

Anni Lupu

RRIS Campus Life Events Manager
anni.lupu@runi.ac.il
+972-9-960-2794

Annette Behrendt-van Zeeland

Financial Aid Manager
abehrendt@runi.ac.il
+972-9-952-7962

Lisa Sharon

Financial Aid Coordinator
Lisa.sharon@runi.ac.il
+972-9-960-2719



[Home Page](#)

[Welcome](#)

[Orientation Week](#)

[Ulpan](#)

[Reichman University
Dormitories](#)

[Health Insurance](#)

[Visa Information](#)

[Living in Israel](#)

[Tuition Fees and
Terms of Payment](#)

[Scholarships and Financial Aid](#)

[Study Skills Center &
Psychological counseling](#)

[Contact Info](#)

[Academic Calendar](#)

- MA Government | MA in HCI
MSc Machine Learning
- MA in Financial Economics
- Global MBA
- One year MBA
- MBA Healthcare Innovation
- MA in Behavioral Economics

[Final Checklist](#)

CONTACT INFORMATION

STUDENT ADMINISTRATION

The Office of the Student Administration handles all academic matters:
Grades; registration for courses; credits; and records of studies.

Talia Baram-Shimshi

Academic Coordinator, MA Government
bstali@runi.ac.il
+972 9 952 7971

Galia Dvir

Academic Coordinator, GMBA
dgalia@runi.ac.il
+972 9 952 7970

Keren Maimon

Academic Coordinator,
MA Human-Computer Interaction (HCI)
keren.maimon@runi.ac.il
+972 9 952 7632

Idit Zeelon Rozen

Academic Coordinator,
MA in Financial Economics (MAFE)
irozen@runi.ac.il
+972 9 952 7972

Adi Fefer

Academic Coordinator,
One-Year MBA
afefer@runi.ac.il
+972 9 952 7274

Michal Applebaum-Berg

Academic Coordinator,
MBA Healthcare Innovation
michalab@runi.ac.il
+972 9 952 7668

Lynn Almagor

Academic Coordinator, MSc Machine
Learning & Data Science
To be contacted through "MYRUNI"
+972 9 9527987

Patricia Kahn

Academic Coordinator,
MA in Behavioral Economics (MABE)
patricia.kahn@runi.ac.il
+972 9 952 7949

ACADEMIC CALENDAR 2024-2025

MA in GOVERNMENT | MA in HCI

M.Sc. in MACHINE LEARNING

[Home Page](#)

[Welcome](#)

[Orientation Week](#)

[Ulpan](#)

[Reichman University
Dormitories](#)

[Health Insurance](#)

[Visa Information](#)

[Living in Israel](#)

[Tuition Fees and
Terms of Payment](#)

[Scholarships and Financial Aid](#)

[Study Skills Center &
Psychological counseling](#)

[Contact Info](#)

[Academic Calendar](#)

- MA Government | MA in HCI
MSc Machine Learning
- MA in Financial Economics
- Global MBA
- One year MBA
- MBA Healthcare Innovation
- MA in Behavioral Economics

[Final Checklist](#)

Orientation week	27.10.2024
Fall semester begins	3.11.2024
<i>Memorial Day for Yitzchak Rabin Z"l</i>	TBA
<i>Hanukkah vacation</i>	29.12.2024
Fall semester ends	31.1.2025
Fall exams begin	2.2.2025
Spring Semester begins	23.3.2025
<i>Passover vacation</i>	7-20.4.2025
Studies resume	21.4.2025
<i>Eve of Holocaust Memorial Day</i>	23.4.2025
<i>Holocaust Memorial Day ceremony</i>	24.4.2025
<i>Israel Memorial Day Ceremony</i>	29.4.2025
<i>Eve of Israel Memorial Day</i>	29.4.2025
<i>Israel Memorial Day</i>	30.4.2025
<i>Israel Independence Day</i>	1.5.2025
<i>Memorial Day ceremony for Ethiopian Jews who perished on their way to Israel</i>	TBA
<i>Shavuot vacation</i>	1-2.6.2025
Graduation ceremony (2023)	TBD
Honorary Fellowship & Outstanding Researchers and Lecturers ceremony	TBD
Student day	TBD
Spring semester ends	4.7.2025
Spring exams begin	6.7.2025
Summer semester begin	TBA
Logistics weekend	TBA
Summer semester ends	TBA

Dates are subject to change.

ACADEMIC CALENDAR 2024-2025

MA IN FINANCIAL ECONOMICS

[Home Page](#)

[Welcome](#)

[Orientation Week](#)

[Ulpan](#)

[Reichman University
Dormitories](#)

[Health Insurance](#)

[Visa Information](#)

[Living in Israel](#)

[Tuition Fees and
Terms of Payment](#)

[Scholarships and Financial Aid](#)

[Study Skills Center &
Psychological counseling](#)

[Contact Info](#)

[Academic Calendar](#)

- MA Government | MA in HCI
- MSc Machine Learning
- MA in Financial Economics
- Global MBA
- One year MBA
- MBA Healthcare Innovation
- MA in Behavioral Economics

[Final Checklist](#)

Opening Event - November 8, 2024

Mini Semester 1	10.11.24 - 20.12.24
Mini Semester 2	5.1.25 - 14.2.25
Mini Semester 3	2.3.25 - 11.4.25
<i>Purim</i>	14.3.25
<i>Pesach Break</i>	13.4.25-18.4.25
<i>Memorial Day and Independence Day</i>	30.4.25-1.5.25
<i>Shavuot</i>	2.6.25
Mini Semester 4	4.5.25 - 13.6.25
Mini Semester 5	29.6.25 - 8.8.25
<i>Rosh Hashanah</i>	22.9.25-24.9.25
<i>Yom Kippur</i>	1.10.25-2.10.25
<i>Succoth</i>	6.10.25-14.10.25
Mini Semester 6	9.11.25 - 19.12.25

Exams will take place between mini semesters, either on **Friday mornings or weekday afternoons**.
The above schedule is tentative and subject to change.



ACADEMIC CALENDAR 2024-2025

GLOBAL MBA

[Home Page](#)

[Welcome](#)

[Orientation Week](#)

[Ulpan](#)

[Reichman University
Dormitories](#)

[Health Insurance](#)

[Visa Information](#)

[Living in Israel](#)

[Tuition Fees and
Terms of Payment](#)

[Scholarships and Financial Aid](#)

[Study Skills Center &
Psychological counseling](#)

[Contact Info](#)

[Academic Calendar](#)

- MA Government | MA in HCI
MSc Machine Learning
- MA in Financial Economics
- Global MBA
- One year MBA
- MBA Healthcare Innovation
- MA in Behavioral Economics

[Final Checklist](#)

Opening Event - November 8, 2024

Mini Semester 1	10.11.24 - 20.12.24
Mini Semester 2	5.1.25 - 14.2.25
Mini Semester 3	2.3.25 - 11.4.25
<i>Purim</i>	14.3.25
<i>Pesach break</i>	13.4.25 - 18.4.25
<i>Memorial day and Independence day</i>	30.4.25 - 1.5.25
<i>Shavuot</i>	2.6.25
Mini Semester 4	4.5.25 - 13.6.25
Mini Semester 5	29.6.25 - 8.8.25
<i>Rosh Hashanah</i>	22.9.25 - 24.9.25
<i>Yom Kippur</i>	1.10.25 - 2.10.25
<i>Succoth</i>	6.10.25 - 14.10.25
Mini Semester 6	9.11.25 - 19.12.25
Mini Semester 7	4.1.26 - 13.2.26
Mini Semester 8	1.3.26 - 17.4.26
<i>Purim</i>	3.3.26
<i>Pesach break</i>	1.4.26 - 7.4.26
<i>Memorial day and Independence day</i>	20.4.26 - 22.4.26
<i>Shavuot</i>	21.5.26 - 22.5.26
Mini Semester 9	10.5.26 - 26.5.26

- New York Study Tour dates will be publicized at the start of the school year.
- Exams will take place between mini semesters, **Friday mornings, or weekday afternoons.**
- The schedule is tentative and subject to change.



ACADEMIC CALENDAR 2024-2025

ONE YEAR MBA

[Home Page](#)

[Welcome](#)

[Orientation Week](#)

[Ulpan](#)

[Reichman University Dormitories](#)

[Health Insurance](#)

[Visa Information](#)

[Living in Israel](#)

[Tuition Fees and Terms of Payment](#)

[Scholarships and Financial Aid](#)

[Study Skills Center & Psychological counseling](#)

[Contact Info](#)

[Academic Calendar](#)

- MA Government | MA in HCI
- MSc Machine Learning
- MA in Financial Economics
- Global MBA
- One year MBA
- MBA Healthcare Innovation
- MA in Behavioral Economics

[Final Checklist](#)

Opening Event - November 8, 2024

Mini Semester 1	10.11.24 - 20.12.24
Mini Semester 2	5.1.25 - 14.2.25
Mini Semester 3	2.3.25 - 11.4.25
<i>Purim</i>	14.3.25
<i>Pesach break</i>	13.4.25 - 18.4.25
<i>Memorial day and Independence day</i>	30.4.25 - 1.5.25
<i>Shavuot</i>	2.6.25
Mini Semester 4	4.5.25 - 13.6.25
Mini Semester 5	29.6.25 - 8.8.25
<i>Rosh Hashanah</i>	22.9.25 - 24.9.25
<i>Yom Kippur</i>	1.10.25 - 2.10.25
<i>Succoth</i>	6.10.25 - 14.10.25

- Exams will take place between mini semesters, **Friday mornings, or weekday afternoons.**
- The schedule is tentative and subject to change.



ACADEMIC CALENDAR 2024-2025

MBA IN HEALTHCARE INNOVATION

[Home Page](#)

[Welcome](#)

[Orientation Week](#)

[Ulpan](#)

[Reichman University Dormitories](#)

[Health Insurance](#)

[Visa Information](#)

[Living in Israel](#)

[Tuition Fees and Terms of Payment](#)

[Scholarships and Financial Aid](#)

[Study Skills Center & Psychological counseling](#)

[Contact Info](#)

[Academic Calendar](#)

- MA Government | MA in HCI
- MSc Machine Learning
- MA in Financial Economics
- Global MBA
- One year MBA
- MBA Healthcare Innovation
- MA in Behavioral Economics

[Final Checklist](#)

Opening Event - November 8, 2024

Mini Semester 1	10.11.24 - 20.12.24
Mini Semester 2	5.1.25 - 14.2.25
Mini Semester 3	2.3.25 - 11.4.25
<i>Purim</i>	14.3.25
<i>Pesach break</i>	13.4.25 - 18.4.25
<i>Memorial day and Independence day</i>	30.4.25 - 1.5.25
<i>Shavuot</i>	2.6.25
Mini Semester 4	4.5.25 - 13.6.25
Mini Semester 5	29.6.25 - 8.8.25
<i>Rosh Hashanah</i>	22.9.25 - 24.9.25
<i>Yom Kippur</i>	1.10.25 - 2.10.25
<i>Succoth</i>	6.10.25 - 14.10.25

- Exams will take place between mini semesters, **Friday mornings, or weekday afternoons.**
- The schedule is tentative and subject to change.



ACADEMIC CALENDAR 2024-2025

MA IN BEHAVIORAL ECONOMICS

[Home Page](#)

[Welcome](#)

[Orientation Week](#)

[Ulpan](#)

[Reichman University Dormitories](#)

[Health Insurance](#)

[Visa Information](#)

[Living in Israel](#)

[Tuition Fees and Terms of Payment](#)

[Scholarships and Financial Aid](#)

[Study Skills Center & Psychological counseling](#)

[Contact Info](#)

[Academic Calendar](#)

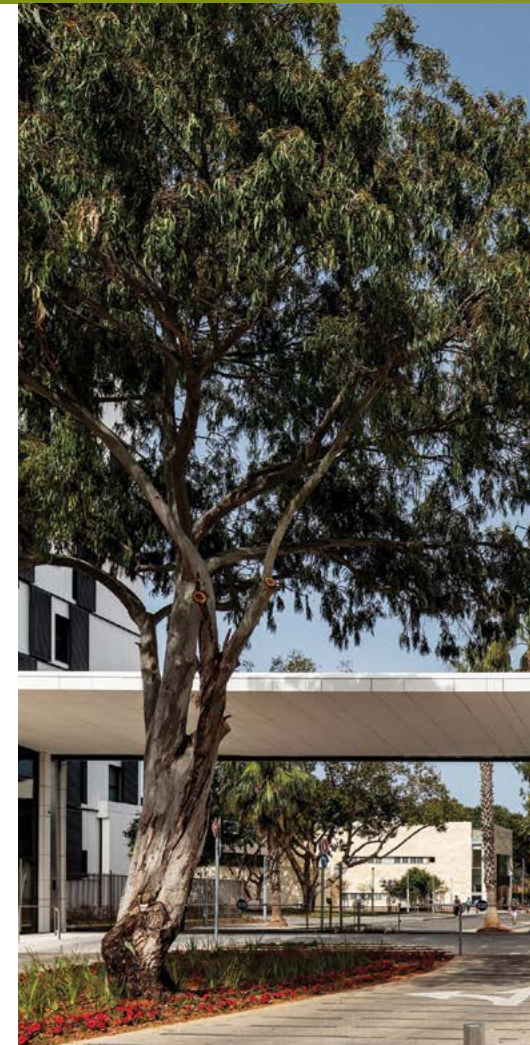
- MA Government | MA in HCI
- MSc Machine Learning
- MA in Financial Economics
- Global MBA
- One year MBA
- MBA Healthcare Innovation
- MA in Behavioral Economics

[Final Checklist](#)

Opening Event - November 7, 2024

Mini Semester 1	10.11.24 - 20.12.24
Mini Semester 2	5.1.25 - 14.2.25
Mini Semester 3	2.3.25 - 11.4.25
<i>Purim</i>	14.3.25
<i>Pesach Break</i>	13.4.25-18.4.25
<i>Memorial Day and Independence Day</i>	30.4.25-1.5.25
<i>Shavuot</i>	2.6.25
Mini Semester 4	4.5.25 - 3.6.25
Mini Semester 5	29.6.25 - 8.8.25
<i>Rosh Hashanah</i>	22.9.25-24.9.25
<i>Yom Kippur</i>	1.10.25-2.10.25
<i>Succoth</i>	6.10.25-14.10.25
Mini Semester 6	9.11.25 - 19.12.25
Mini Semester 7	4.1.26 - 13.2.26
Mini Semester 8	1.3.26 - 17.4.26
<i>Purim</i>	3.3.26
<i>Pesach Break</i>	1.4.26-7.4.26
<i>Memorial Day and Independence Day</i>	20.4.26-22.4.26
<i>Shavuot</i>	21.5.26-22.5.26

- Exams will take place between mini semesters, either on **Friday mornings or weekday afternoons**.
- The above schedule is tentative and subject to change.



ACADEMIC CALENDAR

[Home Page](#)

[Welcome](#)

[Orientation Week](#)

[Ulpan](#)

[Reichman University
Dormitories](#)

[Health Insurance](#)

[Visa Information](#)

[Living in Israel](#)

[Tuition Fees and
Terms of Payment](#)

[Scholarships and Financial Aid](#)

[Study Skills Center &
Psychological counseling](#)

[Contact Info](#)

[Academic Calendar](#)

- MA Government | MA in HCI
MSc Machine Learning
- MA in Financial Economics
- Global MBA
- One year MBA
- MBA Healthcare Innovation
- MA in Behavioral Economics

[Final Checklist](#)

FALL SEMESTER CONCLUSION, EXAM SCHEDULE AND POTENTIAL FOR TIME OFF

Exams begin immediately following the conclusion of fall semester. In accordance with traditional Israeli higher education models, IDC offers students the opportunity to take a first sitting of exams (*moed aleph*) generally during the first four weeks between semesters. Students will receive their *moed aleph* exam schedule at the beginning of the semester. If a student fails the *moed aleph* exam, is not happy with the grade or had to miss the exam due to unforeseen circumstances, he/she is entitled to sit for a second exam (*moed bet*). These second exams are scheduled immediately following the *moed aleph* exams. Therefore, each student has a highly individual schedule, very often with no vacation whatsoever between fall and spring semester dependent on: 1) *moed aleph* schedule, assigned during the first week of the semester; 2) the student's desire to be present for *moed bet*/retakes.

If you are certain that you will not need a retake, you can book your return ticket date upon receipt of your *moed aleph* exam schedule (following your final exam time). If you are booking a ticket to Israel and are concerned about choosing a return ticket date, we strongly urge you to purchase a "flexible fare" ticket that allows you to change your return date with no penalty fee. This will allow you to alter your date according to our exam schedule and need (or lack thereof) to sit for *moed bet* exams. While this class ticket is more expensive than a ticket with inflexible dates, it is significantly less expensive than altering the return date on an inflexible fare ticket if the need arises.

SPRING SEMESTER CONCLUSION, EXAM SCHEDULE AND EXTENDED BREAK

Exams begin immediately following the conclusion of spring semester. Students will receive their *moed aleph* exam schedule at the beginning of semester. As described above, following *moed aleph* exams students are entitled to sit for *moed bet* exams. Spring semester *moed bet* exams are generally scheduled through August. When students have concluded their exams (based on their highly personal schedule and desire to take *moed bet* exams), they are on semester break until mid-October when the next school year begins.

[Home Page](#)

[Welcome](#)

[Orientation Week](#)

[Ulpan](#)

[Reichman University
Dormitories](#)

[Health Insurance](#)

[Visa Information](#)

[Living in Israel](#)

[Tuition Fees and
Terms of Payment](#)

[Scholarships and Financial Aid](#)

[Study Skills Center &
Psychological counseling](#)

[Contact Info](#)

[Academic Calendar](#)

- MA Government | MA in HCI
MSc Machine Learning
- MA in Financial Economics
- Global MBA
- One year MBA
- MBA Healthcare Innovation
- MA in Behavioral Economics

[Final Checklist](#)

A FINAL CHECKLIST

1

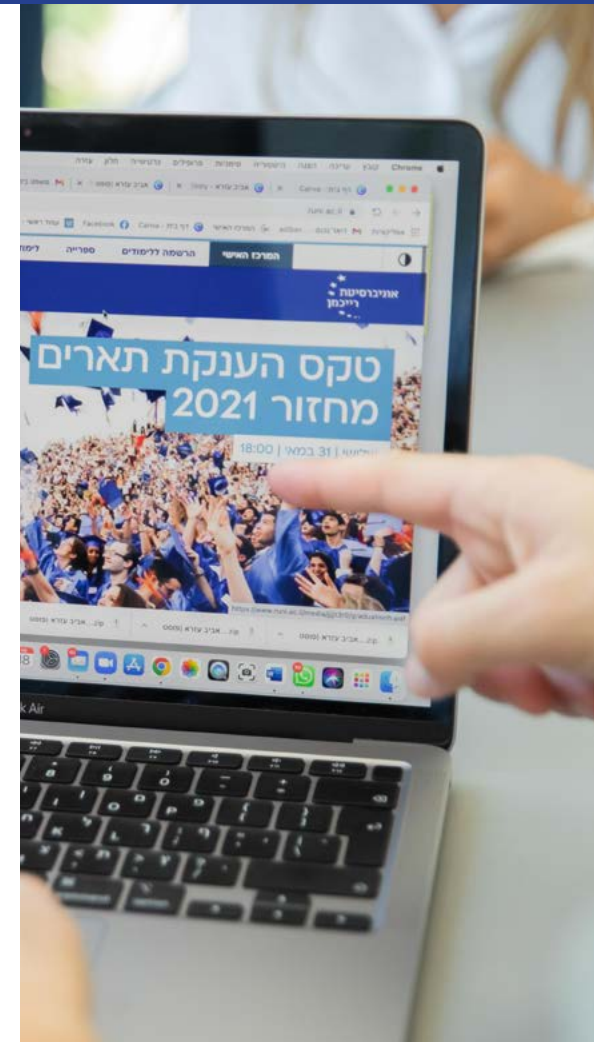
Accept your admissions offer within the next 14 days.

2

Update your personal details in the [Candidate Information Station](#).

3

Confirm your acceptance by logging in to your [Candidate Information Station](#) and paying the enrollment deposit (which will be credited towards your annual tuition payment)



Welcome to REICHMAN UNIVERSITY - We're looking forward to meeting you!